

spring 2008 Report

SAL Initiatives..... 2

Other News of Interest..... 3

SAL Usage / Classes 3

 Fall 2007..... 3

Support..... 4

 Thesis / Special Studies 4

 Doctoral..... 4

 Masters..... 4

 Other Student / Class Projects Support..... 4

 Faculty / Staff Support 4

 General Support..... 4

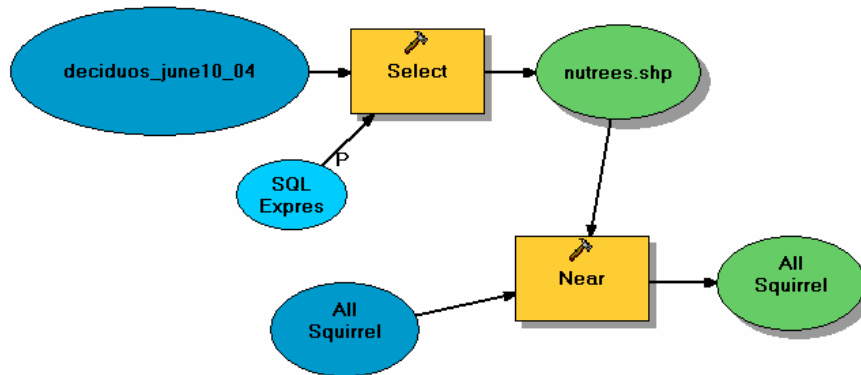
Ongoing Program Support and Development..... 5

 Programmatic..... 5

 Student Assistants 5

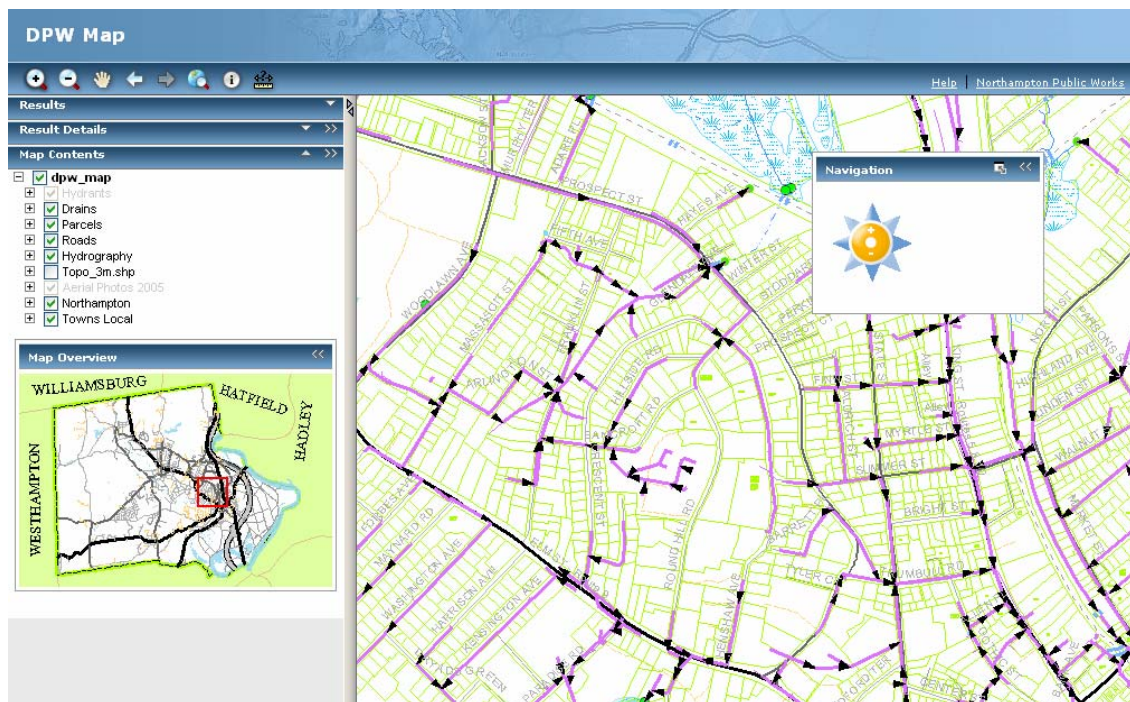
 Software & Data..... 5

Sample model used in BIO245



SAL Initiatives

- Collaborate with GIS Specialists at Amherst, Vassar, Williams, Skidmore, Wheaton, and Trinity College to develop a conference titled “Geospatial Technologies in the Liberal Arts” Startup funds for pre-planning funded by a NITLE IIF grant.
-
- Continue development of infrastructure for interactive and public participation mapping application. The first application user will be Jamie Hubbard for his work on **“Buddhism in the Pioneer Valley”**
- Continue work on NITLE Technology Fellowship to develop expertise in delivering Virtual Globe technologies to Liberal Arts Colleges
- Continue collaboration with Bob Burger to develop and Natural Hazards textbook
- Planning Committee for fall 2008 NEARC conference
- Planning Committee for spring NEARC conference at Smith on May 13th 2007
- Help develop job description and qualifications document for GIS/GPS Technician
- Develop infrastructure for collaborative college-town [interactive map server](#) (below)



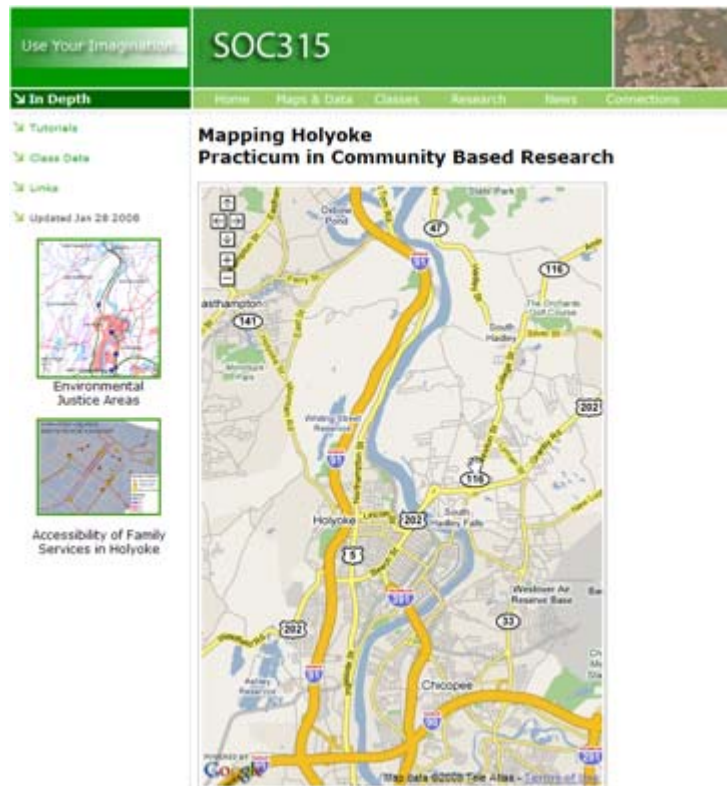
Other News of Interest

- Interterm GIS Course: January 22 – 25, 2008 enrolled 12 students.
- Spring NEARC conference returning to Smith for 4th straight year on May 13th 2008

SAL Usage / Classes Spring 2008

| Class Name | Course Code | Students |
|--|-------------|---------------|
| Vertebrate Anatomy and Evolution (BIO245b) | BIO245 | 3 |
| The Environment | GEO109 | ~ 30 |
| Geomorphology | GEO252 | 12 |
| Archeology | ARC211 | 32 |
| Practicum in Community Based Research | SOC315 | 8 |
| World Population | SOC232 | 17 |
| Art and Ecology | LSS255 | 11 |
| Ecohydrology | EGR315 | 4 |
| Exploring the Local Geologic Landscape | GEO161 | 18 |
| Oceanography | GEO108 | 25 |
| BIO110 | BIO110 | 7 * tentative |

Sociology 315 Class



Support

Thesis / Special Studies

- Cassandra Finger (urban planning techniques and morphology in ancient Rome)

Doctoral

- Jenn Seavey (GIS and analysis support)
- Megan O'Connor (GIS analysis support)

Masters

- Larua Vann (GPS fieldwork, computer support)

Other Student / Class Projects Support

- Andrea Gohl (Geology) - DEMs
- Megan Sawyer (Math) – Campus Mapping
- Laura Paul (Sociology) – Web Mapping
- Lindsey Allen (Architecture) – Campus Mapping
- Mo Speller (Biology) – Campus Tree Mapping

Faculty / Staff Support

- Bob Burger
- Jamie Hubbard
- Elaine Chittenden
- Drew Guswa
- Paul Wetzel

General Support

- Poster printing
- System Administration
- Programming / Scripts
- Mapping/Cartography Projects

Ongoing Program Support and Development

- Continued support for Botanic Garden tree and plant mapping

Programmatic

- Web Page maintenance
- System Administration
- Valley GIS Meetings
- Five College GIS Meetings
- SAL Blog; Screen casts; podcasts

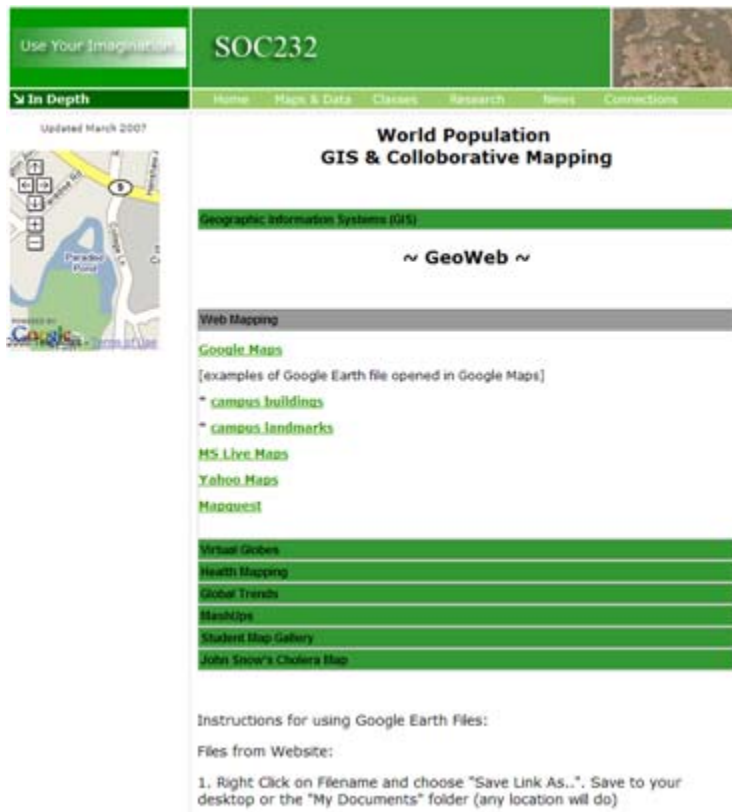
Student Assistants

- Cassandra Finger
- Moitri Ghosh
- Mollie Gabriel
- Lindsey Allen

Software & Data

- No new significant acquisitions

Sociology 232 Class



The screenshot shows the homepage of the SOC232 website. The header features the text "Use Your Imagination" and "SOC232". Below the header is a navigation menu with links for "Home", "Maps & Data", "Classes", "Research", "News", and "Connections". The main content area is titled "World Population GIS & Collaborative Mapping" and includes a sub-header "Geographic Information Systems (GIS)". A section titled "Web Mapping" lists various mapping services: "Google Maps" (with examples of Google Earth files), "MS Live Maps", "Yahoo Maps", and "Mapquest". Below this is a list of links for "Virtual Globes", "Health Mapping", "Global Trends", "FlashOps", "Student Map Gallery", and "John Snow's Cholera Map". At the bottom, there are instructions for using Google Earth files, including a step-by-step guide for saving links from the website.