

# Fall 2007 Report

SAL Initiatives..... 2

Other News of Interest..... 3

SAL Usage / Classes ..... 3

    Fall 2007 ..... 3

Support..... 4

    Thesis / Special Studies ..... 4

    Doctoral..... 4

    Masters..... 4

    Other Student / Class Projects Support..... 4

    Faculty / Staff Support ..... 4

    General Support..... 4

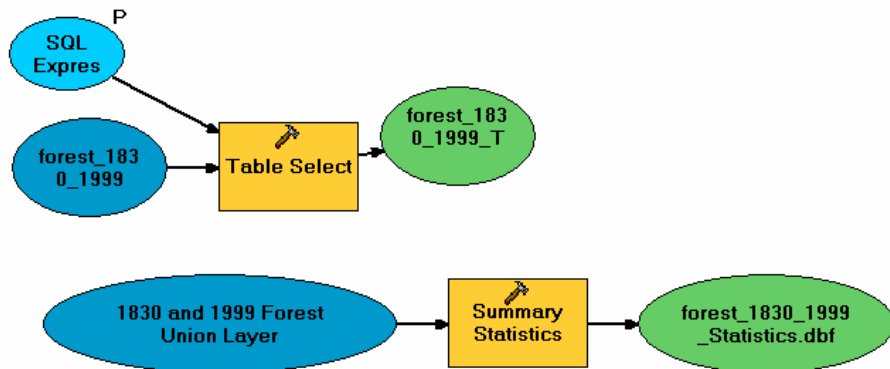
Ongoing Program Support and Development..... 5

    Programmatic..... 5

    Student Assistants ..... 5

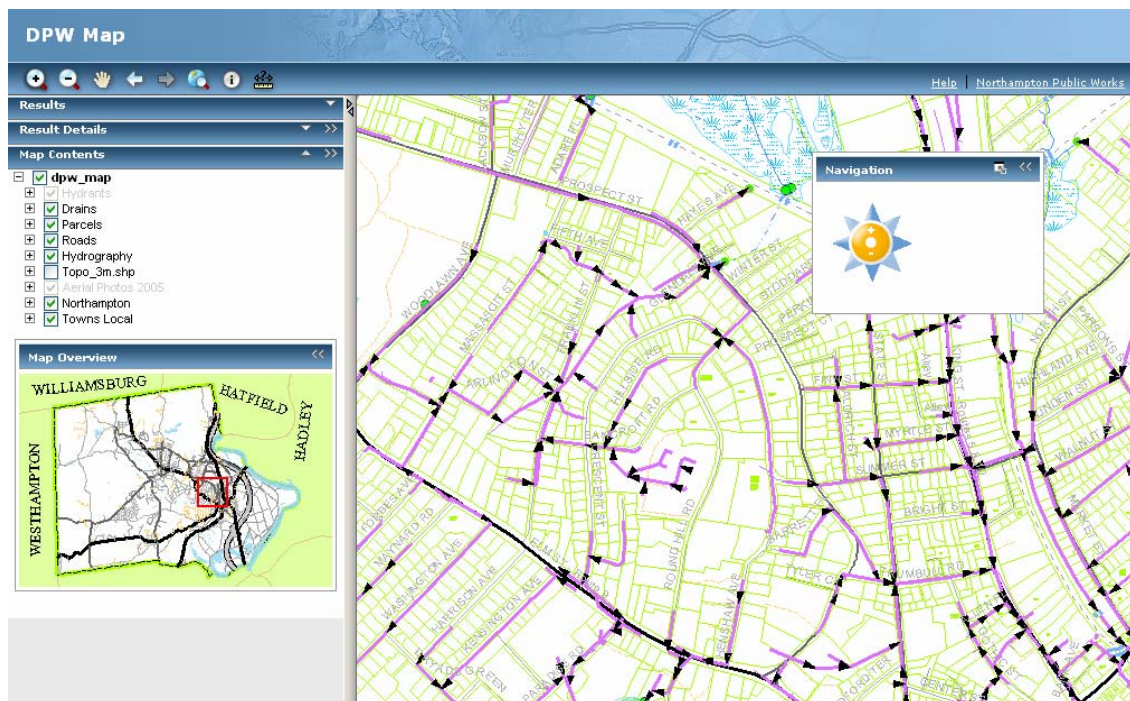
    Software & Data..... 5

Sample model used in BIO364



## SAL Initiatives

- Planning Committee for GIS Day held at Umass on November 2, 2007
- Planning Committee for fall 2008 NEARC conference
- Planning Committee for spring NEARC conference at Smith on May 13<sup>th</sup> 2007
- Help develop job description and qualifications document for GIS/GPS Technician
- Refine and Develop infrastructure for interactive mapping application for “**a discussion of the variety of Buddhism in the Pioneer Valley**”
- Develop Interterm 2008 workshop (January 22-25, 2008)
- Awarded a NITLE Technology Fellowship to develop expertise in delivering Virtual Globe technologies to Liberal Arts Colleges
- Collaboration with Bob Burger to develop and Natural Hazards textbook
- Develop infrastructure for collaborative college-town [interactive map server](#) (below)



## Other News of Interest

- Interterm GIS Course: January 22 – 25, 2008
- Spring NEARC conference returning to Smith for 4<sup>th</sup> straight year on May 13<sup>th</sup> 2008

## SAL Usage / Classes

### Fall 2007

Class Name	Course Code	Students
<a href="#">Animal Behavior Lab</a>	BIO353	7
Plant Ecology	BIO364	5
<a href="#">Pests, Plagues and Profligates: The Biology of Invasions</a>	BIO110	10
<a href="#">Feminisms and the Fate of the Planet</a>	SWG230	8
Introduction to Earth Processes and History	GEO111	GPS Support
Principles of Ecology	BIO266	GPS support


Use Your Imagination...
BIO110

In Depth
Home
Maps & Data
Classes
Research
News
Connections

- ↳ [Healthmap](#)
- ↳ [Google Earth Files](#)
- ↳ [Links to Migratory Bird Data](#)
- ↳ [avian flue wandering wildlife](#)
- ↳ [shorebirds](#)
- ↳ [whooperswan](#)
- ↳ [wild birds from Kazakhstan](#)  
Updated 2007

### Pests, Plagues and Profligates: The Biology of Invasions

#### Disease Mapping



[click to interact with cholera map](#)

# Support

## Thesis / Special Studies

- Cassandra Finger (urban planning techniques and morphology in ancient Rome)

## Doctoral

- Jenn Seavey (GIS and analysis support)

## Masters

- Larua Vann (GPS fieldwork, computer support)

## Other Student / Class Projects Support

- Maria Rendon (Psychology: Historic Holyoke)
- Jessica Wilbarger and team (Engineering Design Clinic: Stream restoration project in Whately; General GIS help, data searching, etc.)
- Indira Deonandan (research support: valley elevations)
- Sophia LaCava-Bohanan (campus map)
- Students in SWG230, BIO110, BIO353, BIO364

## Faculty / Staff Support

- Bob Burger
- Jamie Hubbard
- Elizabeth Armstrong
- James Lowenthal
- Steve Tilley
- Elaine Chittenden
- Jenn Seavey
- Thomas Hartley
- John Brady

## General Support

- Poster printing
- System Administration
- Programming / Scripts
- Mapping/Cartography Projects
  - Buddhism in the Valley

# Ongoing Program Support and Development

- Continued support for Botanic Garden tree and plant mapping

## Programmatic

- Web Page maintenance
- System Administration
- Valley GIS Meetings
- Five College GIS Meetings
- SAL Blog; Screen casts; podcasts

## Student Assistants

- Cassandra Finger
- Moitri Ghosh
- Hannah Davis

## Software & Data

New software and data acquired and installed during the summer and fall includes:

- Update special collections data archive (<http://www.science.smith.edu/sal/data.html#specialcollection>)
- Acquire Adobe Web Development Toolkit
- Updated Arc2Earth License

