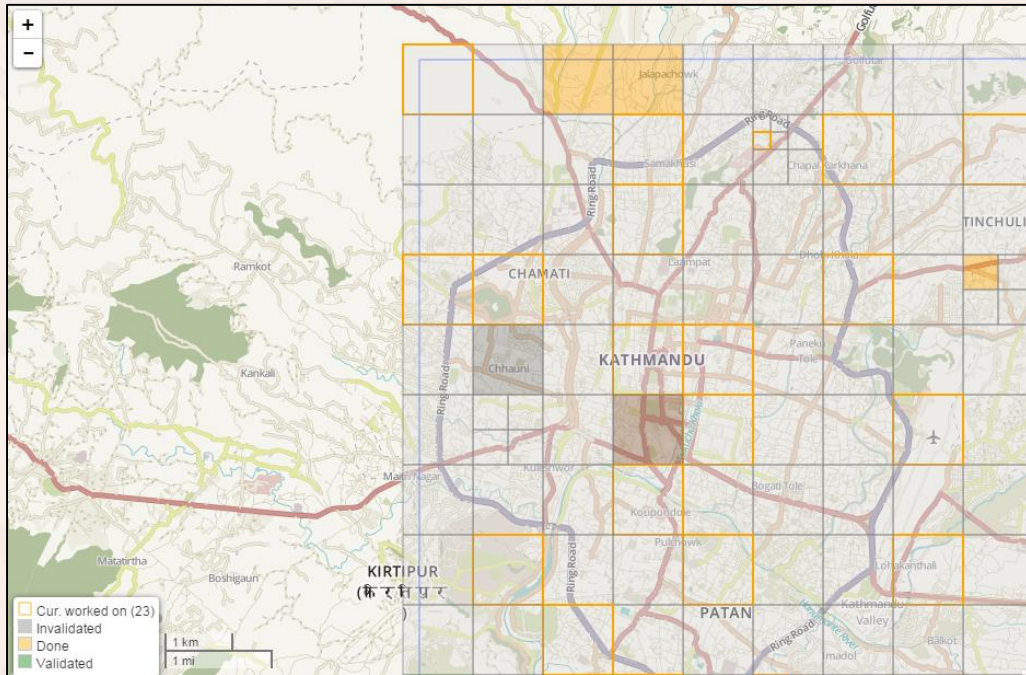


# Nepal Earthquake Response Mapping Workshop Part II

Wednesday May 6<sup>th</sup> from 12pm – 1pm  
in the Spatial Analysis Lab (Sabin-Reed 104)



The Smith College Spatial Analysis Lab is hosting a workshop to provide the Smith Community a space and time to contribute to this effort, while teaching the basics of the online mapping-platform and providing technical assistance.

All are welcome. If you attended the first workshop we especially encourage you to join us for this workshop to help teach your peers and continue the work!

**Contribute to the effort by mapping structures and road networks to help relief workers navigate to those in need**

No lunch will be provided, so please plan accordingly



Visit our website for more information [www.smith.edu/gis](http://www.smith.edu/gis)  
Contact [SAL@smith.edu](mailto:SAL@smith.edu) with questions or comments