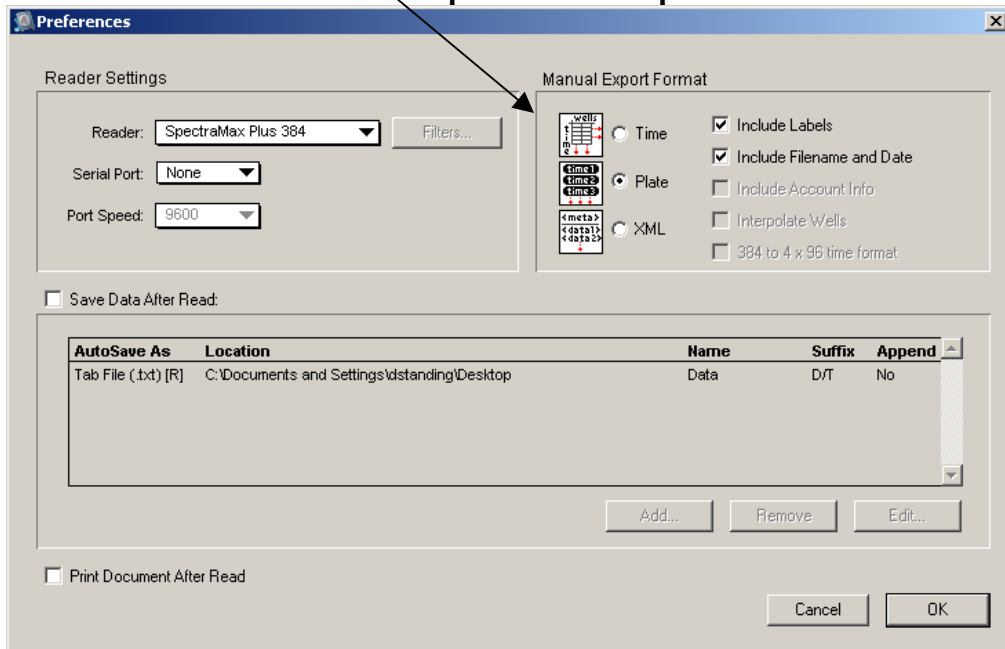
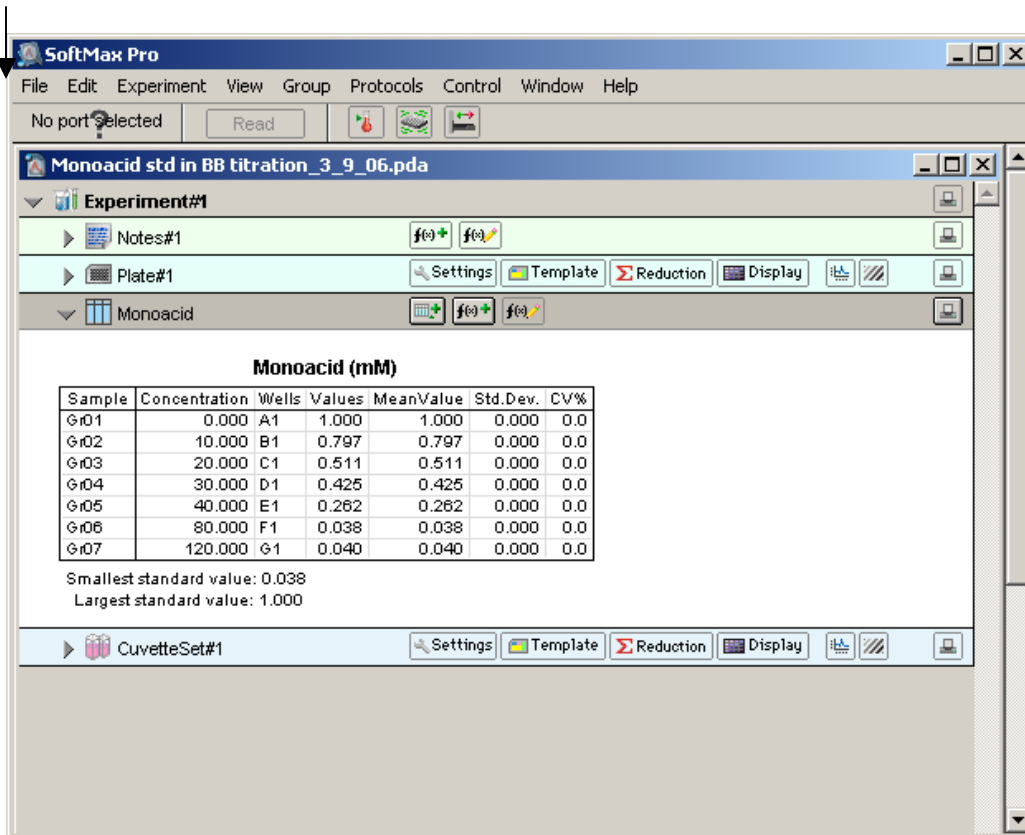


Exporting Group info to Text and importing to Excel

Check that Preferences are set up as desired. Open the data file.

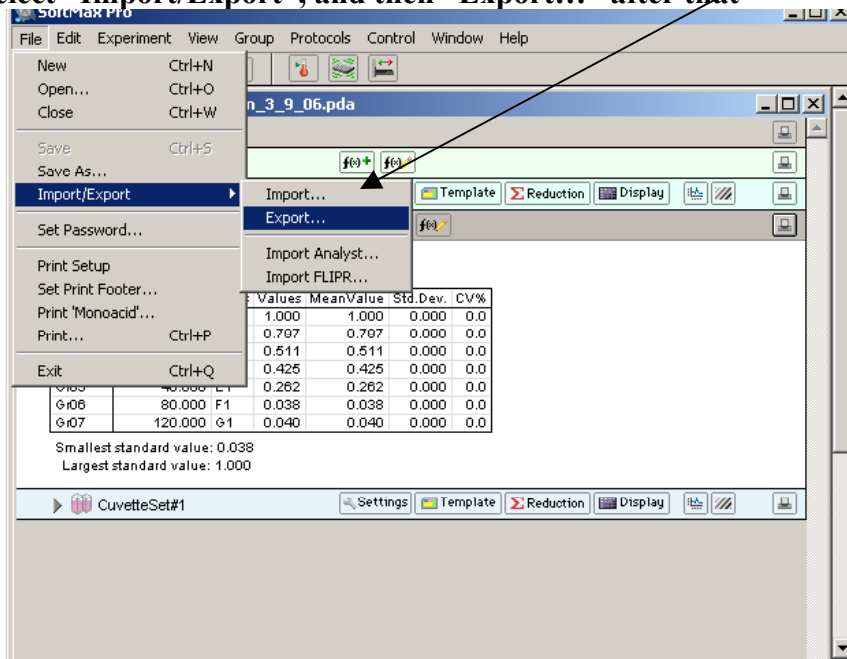


Open the File pull-down menu at the top of the Pro screen

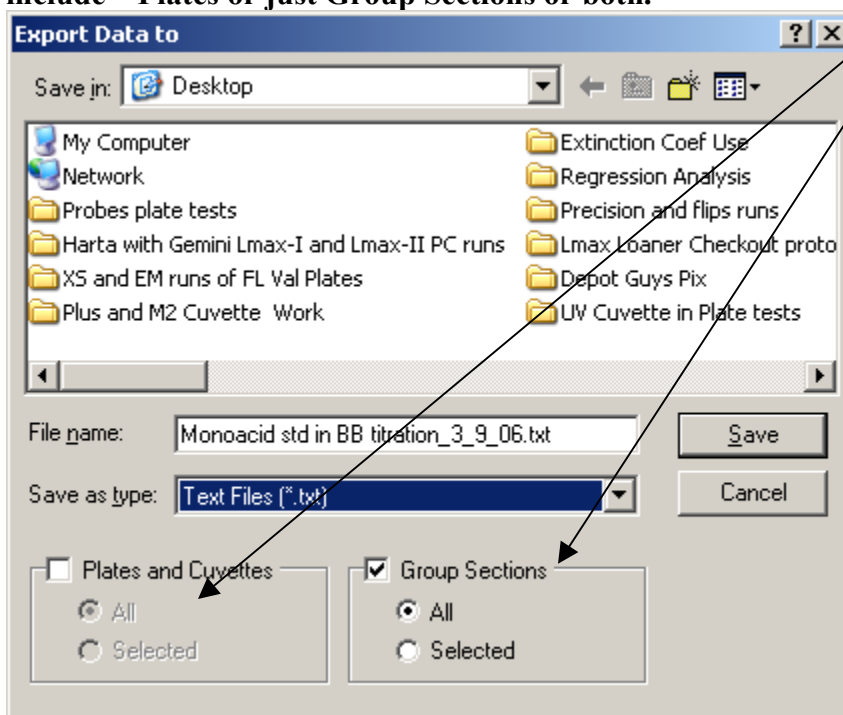


Exporting Group info to Text and importing to Excel

Select “Import/Export”, and then “Export...” after that



Then save the text file export as shown below, after first selecting what you want to include – Plates or just Group Sections or both.



Exporting Group info to Text and importing to Excel

If you have problems, find the text file you saved, and just open it in Notepad (double-click on the file icon to make sure something was there. Group table output would look similar to the example below.

```
##BLOCKS= 1
Group: Monoacid      1
SampleConcentration Wells Values MeanValue Std.Dev. CV%
Gr01  0.000 A1      1.000 1.000 0.000 0.0
Gr02  10.000 B1     0.797 0.797 0.000 0.0
Gr03  20.000 C1     0.511 0.511 0.000 0.0
Gr04  30.000 D1     0.425 0.425 0.000 0.0
Gr05  40.000 E1     0.262 0.262 0.000 0.0
Gr06  80.000 F1     0.038 0.038 0.000 0.0
Gr07  120.000      G1      0.040 0.040 0.000 0.0
```

Smallest standard value: 0.038

Largest standard value: 1.000

~End

Original Filename: Monoacid std in BB titration_3_9_06.pda Date Last Saved: 3/10/2006

Instrument type: Instrument serial number:

When you open Excel, and use its File menu, selecting “Open” and setting to files of type text, then browse to the file and select it, Excel’s Wizard starts. You just click “Finish”, and the export from the text file should now be in Excel columns.

##BLOCKS= 1						
Group:	Monoacid	1				
Sample	Concentration	Wells	Values	MeanValue	Std.Dev.	CV%
Gr01	0	A1	1	1	0	0
Gr02	10	B1	0.797	0.797	0	0
Gr03	20	C1	0.511	0.511	0	0
Gr04	30	D1	0.425	0.425	0	0
Gr05	40	E1	0.262	0.262	0	0
Gr06	80	F1	0.038	0.038	0	0
Gr07	120	G1	0.04	0.04	0	0
Smallest standard value: 0.038						
Largest standard value: 1.000						
~End						
Original Filename: Monoacid std in BB titration_3_9_06.pda Date Last Saved: 3/10/2006						
Instrument type: Instrument serial number:						