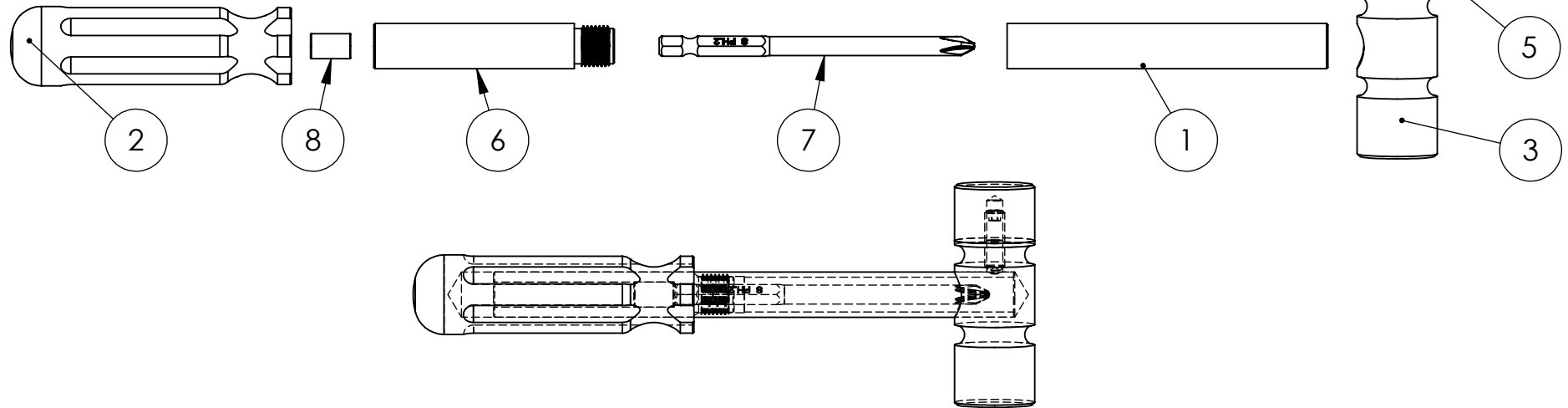
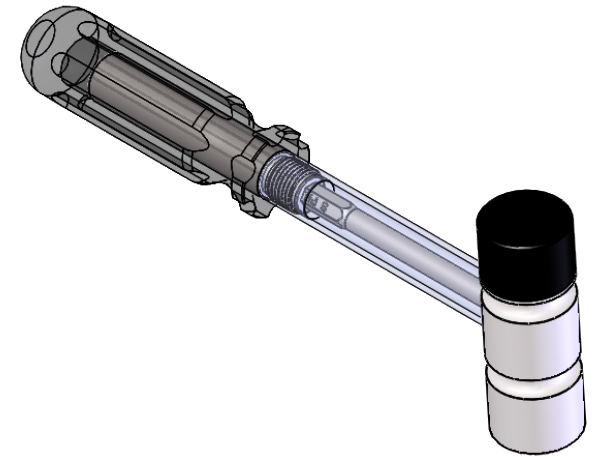


ITEM NO.	PART NUMBER	DESCRIPTION	QTY.
1	tube_01	Tube	1
2	handle_01	Hammer Handle	1
3	Head_01	Hammer Head	1
4	Head_plastic_face_01	Plastic Face	1
5	SSCUPSKT 0.25-20x0.75-HX-N	1/4-20x.75 Set Screw	1
6	drive_shank_01	Drive Shank	1
7	Phillips_Drivebit_4inch	#2 Phillips Drive Bit	1
8	magnet_01	Magnet	1



UNLESS OTHERWISE SPECIFIED:
 DIMENSIONS ARE IN INCHES
 TOLERANCES:
 FRACTIONAL $\pm 1/32"$
 ANGULAR: MACH $\pm .5$ BEND \pm
 TWO PLACE DECIMAL $\pm .01$
 THREE PLACE DECIMAL $\pm .005$
 INTERPRET DRAWING PER: ASME Y14.5-1994

MATERIAL Steel/Acetal Plastic
 FINISH
 COMMENTS: Assembly Procedure: Screw shaft to tube. Press tube into head. Press handle onto shaft. Install set screw in head. Screw plastic face onto head.

Hammer Assembly 2021



DRAWN EJJ DATE 06/11/2021
 CHECKED DKR DATE 06/11/2021

SIZE Part
A 100
 PART REV DOC REV
 1

REMOVE ALL SHARP EDGES AND BURRS

SCALE: 1:2 WEIGHT: SHEET 1 OF 7

R.125 X .125 DEEP (2 PLCS)

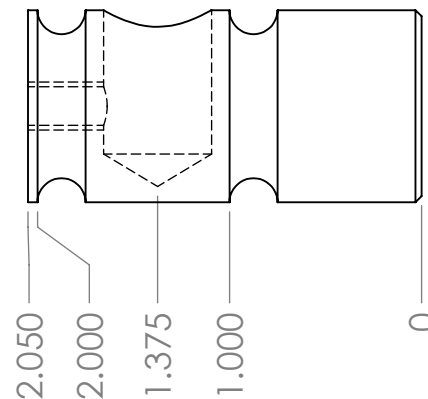
$\phi .563^{+.001}_{-.000} \nabla .750$

KNURL

.03 X 45.00° CHAMFER

$\phi .201$ THRU
1/4-20 UNC THRU
(Centerdrill .200)

$\phi 1.000$



UNLESS OTHERWISE SPECIFIED:

DIMENSIONS ARE IN INCHES

TOLERANCES:

FRACTIONAL $\pm 1/32$ "

ANGULAR: MACH $\pm .5$ BEND \pm

TWO PLACE DECIMAL $\pm .01$

THREE PLACE DECIMAL $\pm .005$

INTERPRET DRAWING PER: ASME Y14.5-1994

MATERIAL Low Carbon Steel

FINISH

COMMENTS:

Hammer Head

DRAWN

EJJ

DATE

06/11/2021

CHECKED

DKR

DATE

06/11/2021

REMOVE ALL SHARP EDGES AND BURRS



SIZE

A

Part

100

PART REV

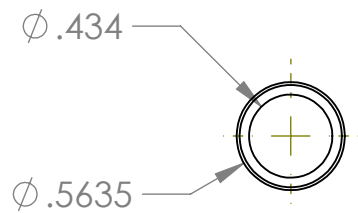
DOC REV

1

SCALE: 1:1

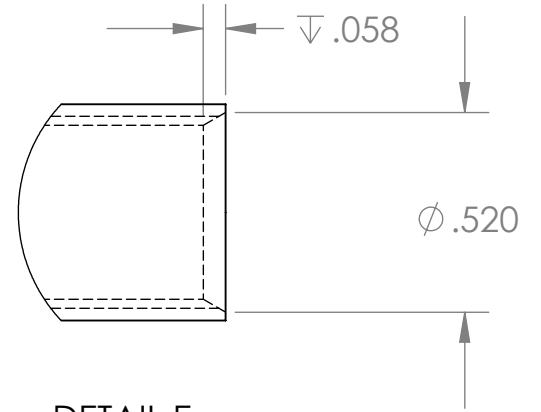
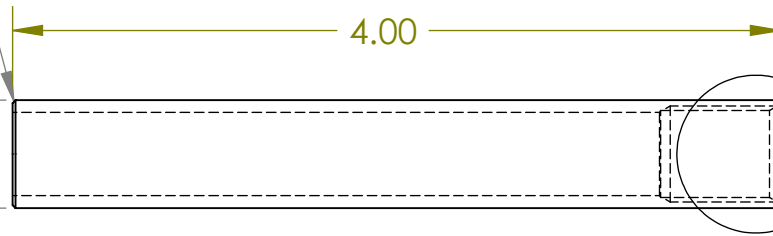
WEIGHT:

SHEET 2 OF 7

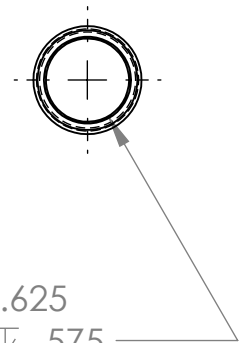


.016 X 45.00° CHAMFER

$\phi .5635$



DETAIL E
SCALE 2 : 1



$\phi .453 \nabla .625$
 $1/2-20 \text{ UNF} \nabla .575$
 $\checkmark \phi .520 \text{ X } 60^\circ, \text{ NEAR SIDE}$

UNLESS OTHERWISE SPECIFIED:
 DIMENSIONS ARE IN INCHES
 TOLERANCES:
 FRACTIONAL $\pm 1/32$ "
 ANGULAR: MACH $\pm .5$ BEND \pm
 TWO PLACE DECIMAL $\pm .01$
 THREE PLACE DECIMAL $\pm .005$
 INTERPRET DRAWING PER: ASME Y14.5-1994

MATERIAL 1/2 steel tubing

FINISH

COMMENTS:

Tube

DRAWN **EJJ**

DATE 06/11/2021

CHECKED **DKR**

DATE 06/11/2021



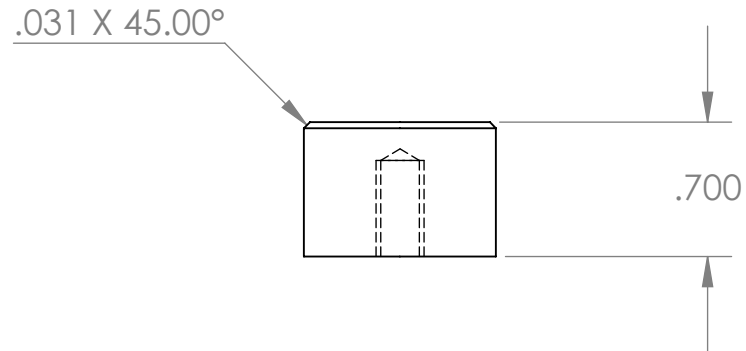
SIZE **A** Part **100**

PART REV **1** DOC REV **1**

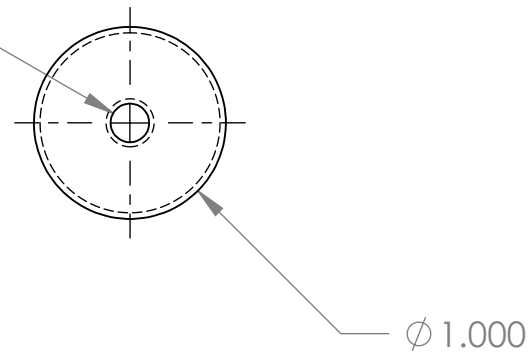
REMOVE ALL SHARP EDGES AND BURRS

SCALE: 1:1 WEIGHT:

SHEET 3 OF 7



(Centerdrill .200)
 \varnothing .201 ∇ .500
 1/4-20 UNC ∇ .500



Turn, Part-off, using Trak program 303
 450RPM, tools #8, #3

1. Chuck stock 1.5" from Chuck jaws
2. Face bar with tool #8, Zero Z axis
3. Run Program 303

UNLESS OTHERWISE SPECIFIED:
 DIMENSIONS ARE IN INCHES
 TOLERANCES:
 FRACTIONAL \pm 1/32"
 ANGULAR: MACH \pm .5 BEND \pm
 TWO PLACE DECIMAL \pm .01
 THREE PLACE DECIMAL \pm .005
 INTERPRET DRAWING PER: ASME Y14.5-1994

MATERIAL ABS Plastic

FINISH

COMMENTS:

Plastic Face



DRAWN EJJ
 CHECKED DKR

DATE 06/11/2021
 DATE 06/11/2021

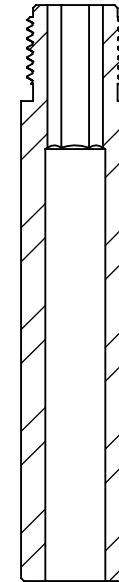
SIZE Part
A 100

PART REV DOC REV
 1 1

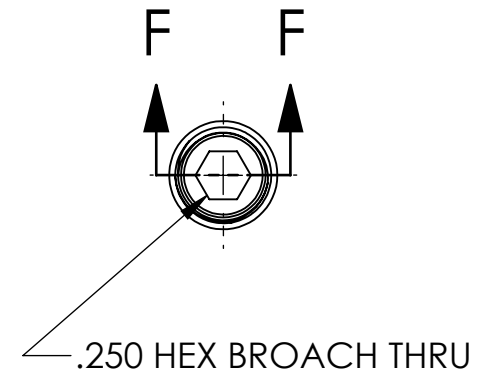
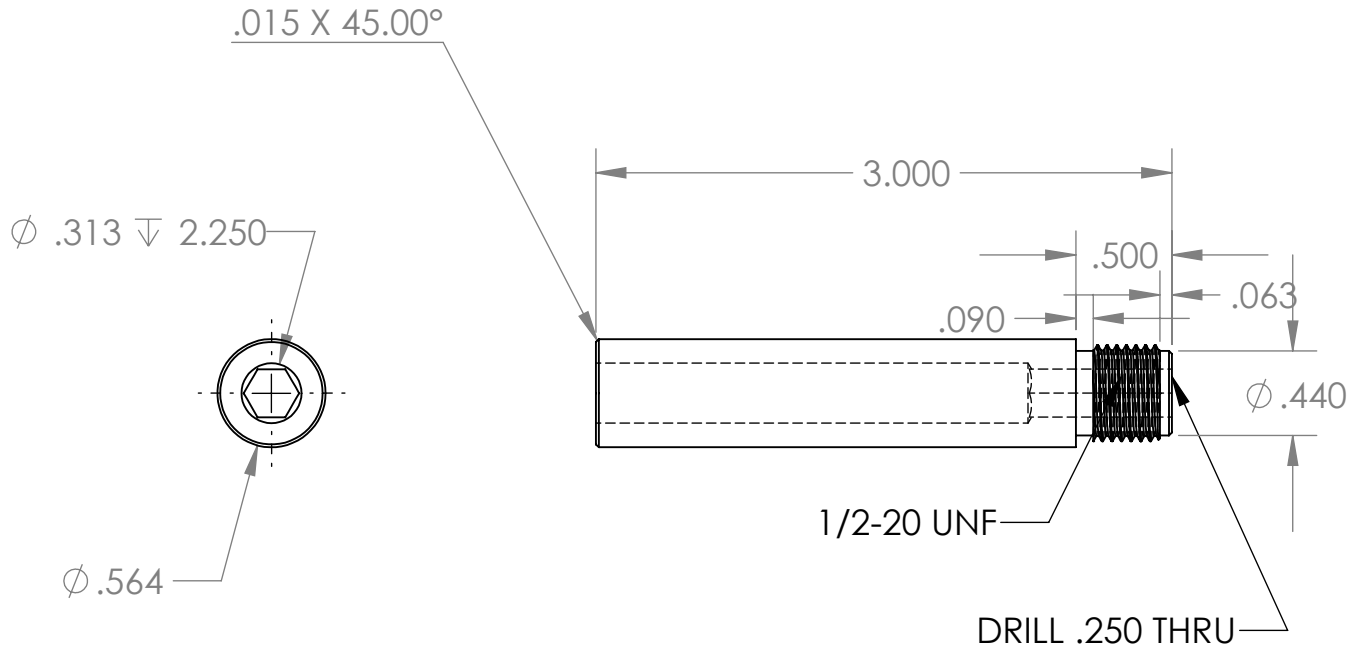
REMOVE ALL SHARP EDGES AND BURRS

SCALE: 1:1 WEIGHT: SHEET 4 OF 7

Trak Lathe Prog 713 to drill 5/16 dia hole
 Turn part around
 Trak Lathe Prog 712 to turn, thread, and drill .25 dia hole
 See Operation sheet for instructions



SECTION F-F
 SCALE 1 : 1



UNLESS OTHERWISE SPECIFIED:
 DIMENSIONS ARE IN INCHES
 TOLERANCES:
 FRACTIONAL $\pm 1/32"$
 ANGULAR: MACH $\pm .5$ BEND \pm
 TWO PLACE DECIMAL $\pm .01$
 THREE PLACE DECIMAL $\pm .005$
 INTERPRET DRAWING PER: ASME Y14.5-1994

MATERIAL AISI 1020 Steel, Cold
 FINISH Rolled

COMMENTS:

Drive Shank

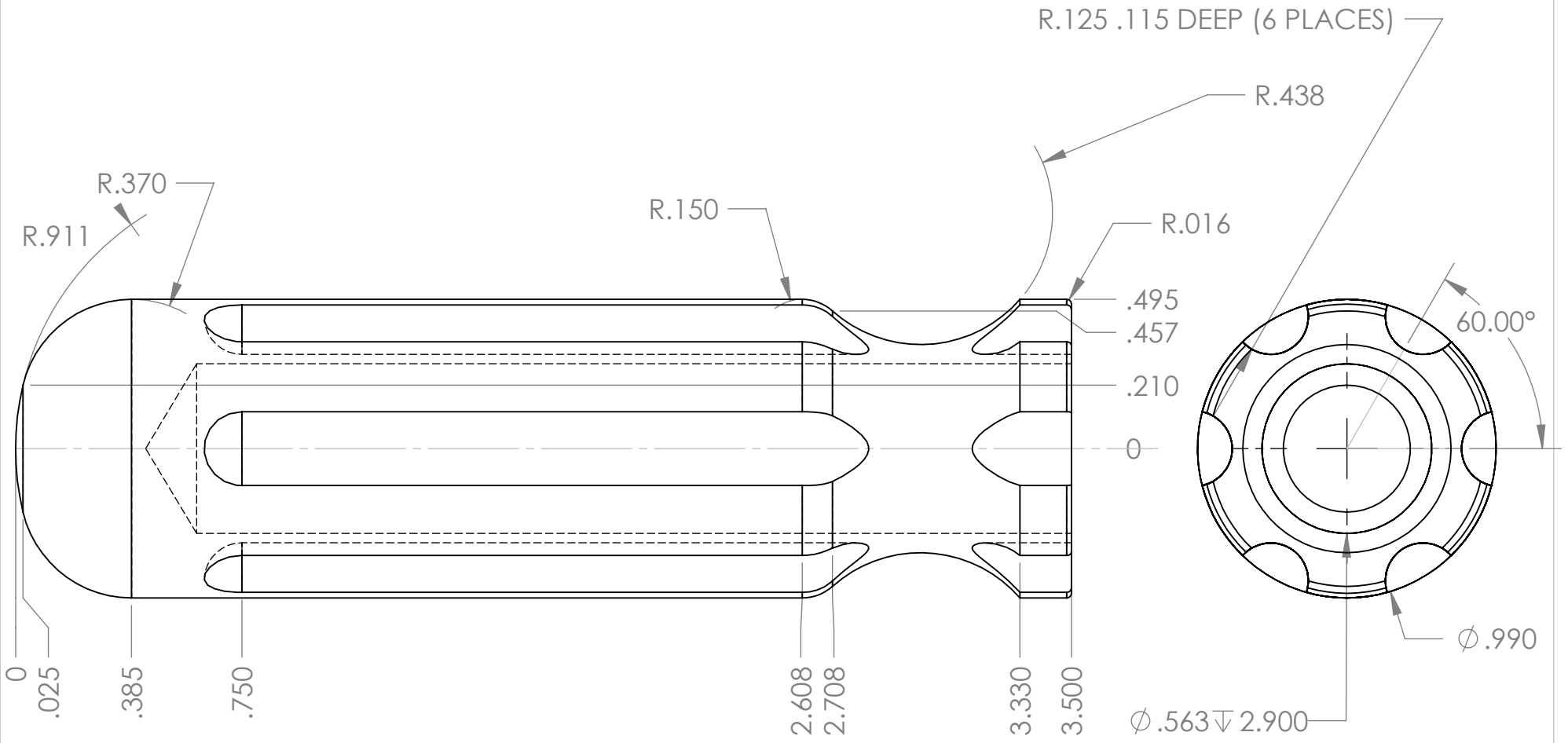
DRAWN EJJ DATE 06/11/2021
 CHECKED DKR DATE 06/11/2021

REMOVE ALL SHARP EDGES AND BURRS



SIZE Part
A 100
 PART REV DOC REV
 1 1

SCALE: 1:2 WEIGHT: SHEET 5 OF 7



UNLESS OTHERWISE SPECIFIED:

DIMENSIONS ARE IN INCHES

TOLERANCES:

FRACTIONAL $\pm 1/32"$

ANGULAR: MACH $\pm .5$ BEND \pm

TWO PLACE DECIMAL $\pm .01$

THREE PLACE DECIMAL $\pm .005$

INTERPRET DRAWING PER: ASME Y14.5-1994

MATERIAL Acetel

FINISH

COMMENTS:

3D Printed Part. Print with FFF Carbon Fiber/ABS

Hammer Handle

DRAWN EJJ

DATE 06/11/2021

CHECKED DKR

DATE 06/11/2021

REMOVE ALL SHARP EDGES AND BURRS

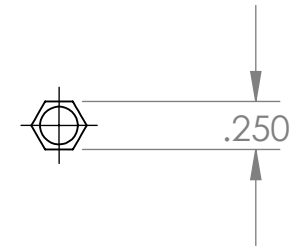
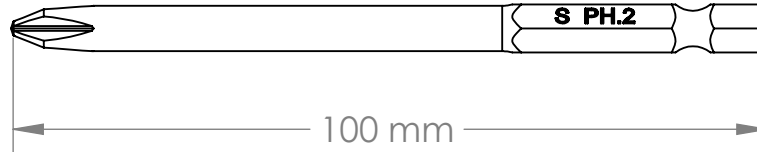
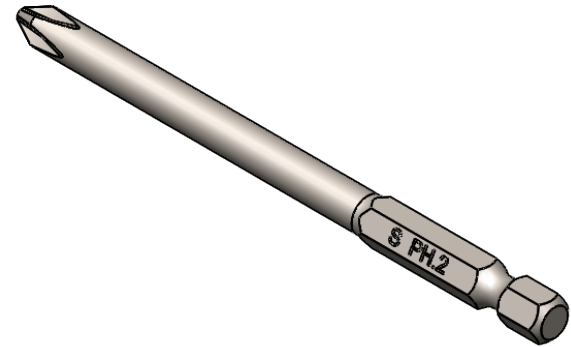


SIZE Part
A 100

PART REV DOC REV
1 1

SCALE: 1:2 WEIGHT:

SHEET 6 OF 7



UNLESS OTHERWISE SPECIFIED:

DIMENSIONS ARE IN INCHES

TOLERANCES:

FRACTIONAL $\pm 1/32"$

ANGULAR: MACH $\pm .5$ BEND \pm

TWO PLACE DECIMAL $\pm .01$

THREE PLACE DECIMAL $\pm .005$

INTERPRET DRAWING PER: ASME Y14.5-1994

MATERIAL	Tool Steel
FINISH	
COMMENTS:	Purchased Component

#2 Phillips Drive Bit

DRAWN	EJJ	DATE	06/11/2021
CHECKED	DKR	DATE	06/11/2021
REMOVE ALL SHARP EDGES AND BURRS			



SIZE	Part	PART REV	DOC REV
A	100	A	1
SCALE: 1:2	WEIGHT:	SHEET 7 OF 7	