

Implementing a Grid State Indicator for Responsive Retail Demand

Jinjin Lu, Judith Cardell
Picker Engineering Program
Smith College

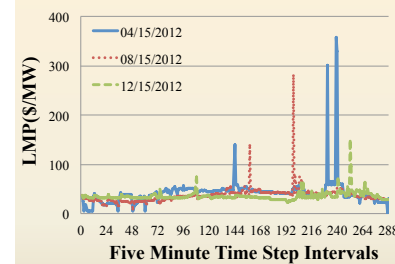
Overview

- CAISO Grid State Indicator
- Indicator Signal Model Design
- Customers Response Modeling
- Pricing Rates Scenarios
- Benefits Assessment
- Challenges

CAISO Grid State Indicator

- Representation
 - Composite Market Price
- Components
 - Locational Marginal Price (LMP)
 - Highest Ancillary Service Price
 - Ramping Capacity Price

Indicator Signal Design



- Composite Market Price = LMP
- Signal Index levels

Figure 1. The LMP over time in NYC

Table 1. The Specified Signal Index Levels

Signal Index	Lower Limit (\$/MWh)	Upper Limit (\$/MWh)
0	NA	-20
1	-20	0.25*off-peak average
2	0.25*off-peak average	0.5*off-peak average
3	0.5*off-peak average	0.75*off-peak average
4	0.75*off-peak average	0.9*on-peak average
5	0.9*on-peak average	1.1*on-peak average
6	1.1*on-peak average	1.3*on-peak average
7	1.3*on-peak average	2*on-peak average
8	2*on-peak average	5*on-peak average
9	5*on-peak average	10*on-peak average
10	10*on-peak average	NA

Customers Response Modeling

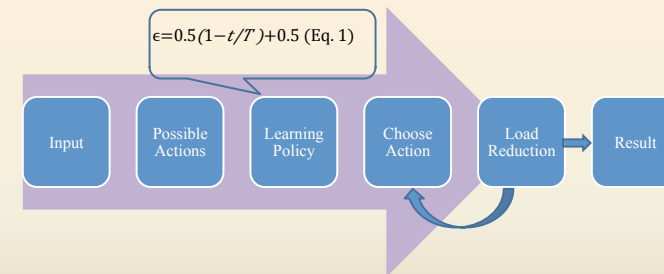


Figure 2. Q-Learning Flow Chart

Demand Response Scenarios

- Dynamic Pricing Rates
 - Savings = load reduction * LMP
- Flat Rates
 - Reward = (LMP – Flat Rate) / MW
 - Savings
 - ◆ Bills = Load reduction * Flat rate
 - ◆ Incentives = Load reduction * Reward

Assessing Benefits

- Total load reduction
 - 11.5-23.0 GW
 - Percentage < 1%
- Total money savings
 - 3.7- 7.5 million dollars

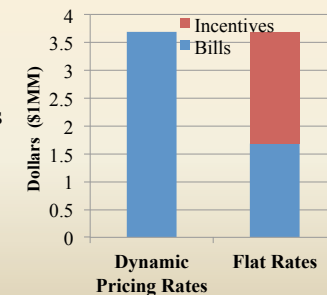


Figure 3. The Column Chart of savings

Challenges

- High Price Spikes vs. Peak Intervals

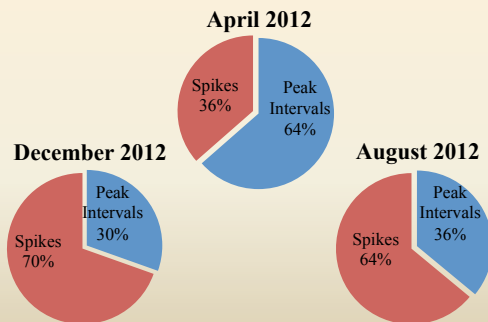


Figure 4. The Pie Charts of High Price Spikes vs. Peak Intervals

Challenges

- High Price Events & Load Correlation

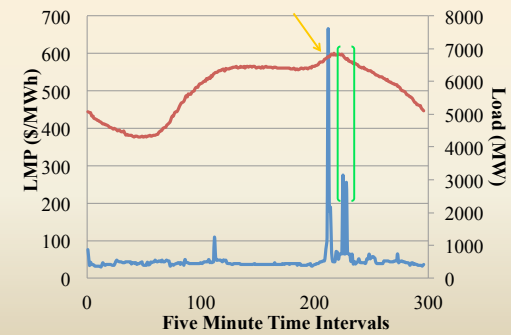


Figure 5. LMP Corresponding with Load on December 14th, 2012

Conclusion

- Modeling
- Potential Outcomes
- Future Adaptation

Thank you!



Thank you!

