

Stenella attenuata. By William F. Perrin

Published 26 December 2001 by the American Society of Mammalogists

Stenella attenuata (Gray, 1846)

Pantropical Spotted Dolphin

- Delphinus velox* G. Cuvier, 1829:288. Type locality “Ceylon” (Sri Lanka).
- Delphinus pseudodelphis* Wiegmann in Wagner, 1840:pl. 358 (no text). Type locality not given.
- Steno attenuatus* Gray, 1846:44, pl. 28. Type locality not given.
- Delphinus brevimanus* Wagner, 1846:7, pl. 361, fig. 2. Type locality not given.
- Delphinus albirostratus* Peale, 1848:34, pl. 7, fig. 2. Type locality “Pacific Ocean; latitude 2°47'5”S., longitude 174°13'W. of Greenwich” (near Phoenix Islands).
- Delphinus microbrachium* Gray, 1850:119. New name for *D. brevimanus* Wagner.
- Steno capensis* Gray, 1865:522. Type locality “Cape of Good Hope” (South Africa).
- Clymene punctata* Gray, 1866:738. Type locality “Lat. 16°40'N., long. 21°W.” (near Cape Verde, West Africa).
- Steno consimilis* Malm, 1871:104, pl. 6, figs. 53a and 53b. Type locality “Madagaskar.”
- Prodelphinus graffmani* Lönnberg, 1934:1, pl. 1. Type locality “approximately 20 miles north of the port of Acapulco” (Mexico).
- Stenella attenuata* Iredale and Troughton, 1934:66. First use of current name combination.

CONTEXT AND CONTENT. Order Cetacea, suborder Odontoceti, family Delphinidae, subfamily Delphininae (LeDuc et al. 1999). Genus *Stenella* contains 5 species (Rice 1998). Two subspecies recognized, 1 offshore and 1 coastal (Perrin et al. 1987):

- S. a. attenuata* (Gray, 1846:44, pl. 28). Type locality not given.
- S. a. graffmani* (Lönnberg, 1934:1, pl. 1), see above.

DIAGNOSIS. The pantropical spotted dolphin (Fig. 1) is distinct from the Atlantic spotted dolphin *S. frontalis* in external color. The unspotted calf has a strongly defined cape passing high over the eye, a flipper stripe terminating anteriorly at the angle of gape, and a peduncle divided into dark upper and light lower portions (Perrin 1970), as opposed to a weakly defined cape, a flipper stripe terminating variably between end of gape and eye, and uniform color of the peduncle in *S. frontalis*. *S. attenuata* has no spinal blaze as in *S. frontalis*. Eye stripe is relatively narrow (1–2 cm), as opposed to broad in *S. frontalis*.

In adults several centimeters of the distal ends of rostrum and lower jaw may be white (not present in *S. frontalis*). *S. attenuata* differs from the similarly sized and shaped *Delphinus capensis*, *D. delphis*, *S. longirostris*, *S. clymene*, *S. coeruleoalba*, *Sousa chinensis*, *Sousa plumbea*, *Sousa teuszi*, *Sotalia fluviatilis*, *Tursiops aduncus*, and *T. truncatus* in ground color pattern (shades of gray, cape high over eye, no spinal blaze, no stripes, peduncle divided into light upper and dark lower halves) and in possessing light dorsal spots.

Skull can be confused with that of *S. frontalis*, with which it overlaps in every character (Perrin et al. 1987). In some geographic areas, such as the Caribbean, skulls of the 2 species appear nearly identical. Both have a relatively long and narrow, relatively thick rostrum with no palatal grooves, a large number of small slender teeth (35–48 in each jaw in *S. attenuata* and 30–42 in *S. frontalis*), medially convergent premaxillae, medium-sized rounded temporal fossae, and arcuate rami (Heyning and Perrin 1994; Perrin et al. 1981, 1987). Individual skulls can be identified as *S. attenuata* or *S. frontalis* on a maximum-likelihood basis with stepwise discriminant classification functions incorporating 4 measure-

ments and a tooth count: width of the rostrum at ¾ length, width of the rostrum at ½ length divided by postorbital width, width of the prenarial triangle at 60 mm divided by postorbital width, and highest rostral tooth count (Perrin et al. 1987). The respective coefficients for the variables and constants are: (*S. attenuata*) –0.0984, 1.7263, 0.0158, 14.0818, –494.2775; (*S. frontalis*) 0.0317, 1.8991, –0.3063, 12.7033, –500.8247; to use, add products of variables and coefficients to constants, and classify as *S. attenuata* or *S. frontalis*, depending on which classification function has the higher value. Palatal grooves that are present in *S. clymene*, *S. longirostris*, *Delphinus*, *Lagenodelphis hosei*, and some specimens of *S. coeruleoalba* are lacking in the pantropical spotted dolphin. *S. attenuata* also differs from these species in not possessing a distally flattened and broadened rostrum and sigmoid rami (Perrin et al. 1981). Vertebral count (74–84) does not overlap with that of *S. frontalis* (67–72).

GENERAL CHARACTERS. The pantropical spotted dolphin is a small and slender dolphin; length of sexually mature adults ranged from 162 to 257 cm ($n > 7,791$ —Perrin and Reilly 1984). Maximum recorded weight was 119 kg (a 257-cm male from the Bay of Panama—Perrin and Hohn 1994). Sex-specific relationships between body length (L) and mass (M) are: $\log M = -4.1576 + 2.6120 \log L$ ($n = 33$ nonpregnant oceanic females from the eastern tropical Pacific), and $\log M = -4.7135 + 2.873 \log L$ ($n = 66$ males—Perrin et al. 1976). Ranges of other external measurements follow (in cm, with parenthetical sample size): tip of upper jaw to apex of melon, 8–13 (139); tip of upper jaw to end of gape, 21–29 (161); tip of upper jaw to umbilical scar, 80–107 (131); tip of upper jaw to tip of dorsal fin, 97–120 (128); girth at axilla, 71–99 (130); anterior length of flipper, 23–30 (27); width of flipper, 8–12 (27); span of flukes, 36–49 (120); width of fluke, 10–15 (17); height of dorsal fin, 12–20 (111—Perrin and Hohn 1994; Perrin et al. 1987).

Eye stripe encloses a black eye spot and extensions of the eye spot as a black line (a few mm wide) occur forward to apex of melon (Perrin 1997). The entire eye stripe may be bordered by a narrow light line. Blowhole stripe is relatively narrow and may be composed of subelements. Intersection of anterior end of flipper stripe and lip mark is demarcated by a narrow light line. Ventral margin of flipper stripe may be bordered by a narrow light line and subtended by a parallel narrow dark line. A light-gray band (4–6 cm) may parallel the ventral margin of the cape. In heavily spotted individuals of the eastern Pacific coastal subspecies, the ground pattern may be nearly obscured dorsally. Spotting may extend to



FIG. 1. Gray's pantropical spotted dolphin (*Stenella attenuata attenuata*) from the eastern tropical Pacific. Photograph courtesy of R. L. Pitman and the U.S. National Marine Fisheries Service.

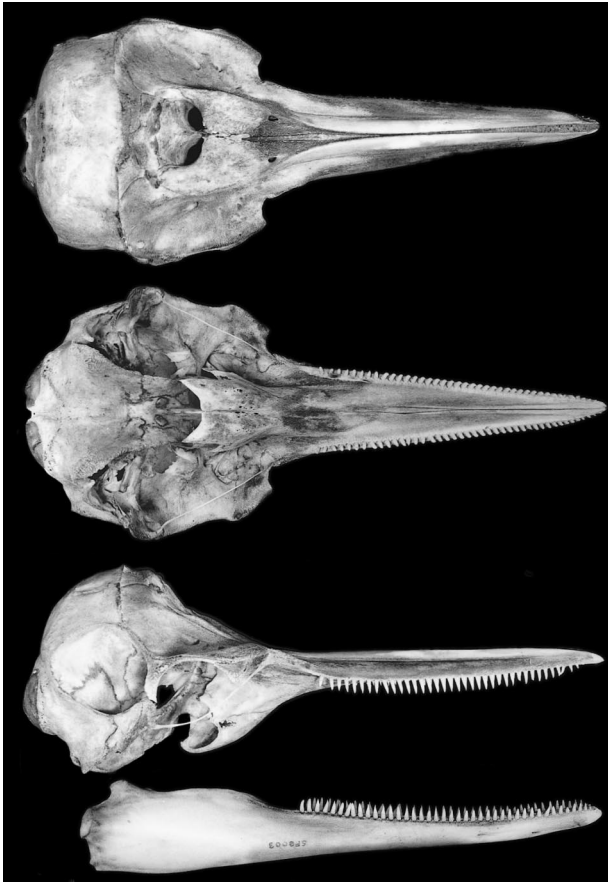


FIG. 2. Dorsal, ventral, and lateral views of cranium, and lateral and dorsal views of mandible of *Stenella attenuata attenuata* from the eastern tropical Pacific (sexually mature female, 181 cm total length, Southwest Fisheries Science Center SWFC 0014; erroneously identified as male in Perrin and Hohn [1994]). Greatest length of skull is 384 mm.

dorsal fin and flippers. Dorsal fin is strongly falcate and relatively narrow.

The pantropical spotted dolphin varies geographically in size as well as in the degree of spotting and is sexually dimorphic in size (Perrin and Hohn 1994; Perrin and Reilly 1984; Perrin et al. 1987). In the eastern Pacific, average lengths of adult males in the coastal and offshore subspecies were 223 cm ($n = 47$, range 197–246) and 200 cm ($n = 1,280$, range 166–240), respectively. Average lengths of adult females were 207 cm ($n = 87$, range 179–227) and 182 cm ($n = 3,890$, range 163–215), respectively. The length for males in the western North Pacific, southwest Indian Ocean, North Atlantic, and Gulf of Mexico ranged from 193 to 234 cm ($n > 307$) and for females from 173 to 215 cm ($n > 348$). In the eastern and western tropical Atlantic, the large coastal form of *S. attenuata* is ecologically replaced by a similar large form of *S. frontalis*.

Skull (Fig. 2) is 356–450 mm long (condylobasal length; $n = 315$) and 148–198 mm wide (zygomatic width; $n = 183$), with a relatively long and narrow rostrum (208–287 mm long and 35–60 mm wide at half-length; $n = 176$ and 185, respectively—Perrin 1975). Rostrum tapers to a relatively sharp and deep tip; distal teeth are not splayed as in some delphinines. Premaxillae and maxillae begin to fuse distally at about the time of sexual maturation, and in an older adult skull the fusion may extend over several centimeters. The tip of the rostrum may become more blunt with age and is more blunt in adult males than in females. Premaxillae may also fuse medially in adults. Palate is flat at midlength. Pterygoid hamuli are usually in contact medially but may be separated by several millimeters. The 2 terminal teeth are very small and may be buried in bone. Ramus is arcuate and symphysis relatively long. Tympano-periotic bones closely resemble those of *S. coeruleoalba* (Kasuya 1973); ventral keel is conspicuously high. Ranges

of tooth counts and additional selected measurements (in mm with parenthetical sample size) for specimens from around the world (measurements described in Perrin 1975) are: upper teeth, 35–48 per row (315); lower teeth, 34–47 per row (315); width of rostrum at base, 74–100 (186); width of rostrum at $\frac{3}{4}$ length, 23–43 (177); preorbital width, 134–178 (184); postorbital width, 151–196 (183); greatest width of premaxillae, 57–76 (186); parietal width, 129–161 (185); length of temporal fossa, 53–97 (184); height of temporal fossa, 33–79 (184); length of ramus, 296–393 (167); tooth diameter (mid-lower row, transverse), 2.6–4.1 (42); width of preauricular triangle at 60 mm, 2.1–15.6 (160—Perrin and Hohn 1994; Perrin et al. 1987). Sexual dimorphism in the skull is slight; percentage differences (females versus males) in 30 measurements of 170 offshore specimens from the eastern tropical Pacific (Perrin et al. 1994b) ranged from -1.3% (length of lower toothrow) to $+6.7\%$ (width of rostrum at $\frac{3}{4}$ length). The number of teeth does not differ between males and females.

Geographical variation in the size of the skull is pronounced (Perrin and Hohn 1994; Perrin et al. 1987, 1994b). Skulls of coastal subspecies of the eastern tropical Pacific are the largest, those of offshore dolphins immediately to the west are the smallest, and skulls from the western Pacific, Indian Ocean, and Atlantic are intermediate. Averages of selected skull measurements adjusted for sexual dimorphism (in cm) for 575 specimens of offshore subspecies and 31 of coastal subspecies in the eastern tropical Pacific, respectively, are as follows: condylobasal length, 396, 437; length of rostrum, 237, 262; width of rostrum at base, 83, 91; width of rostrum at $\frac{3}{4}$ length, 30, 36; zygomatic width, 165, 181; greatest width of premaxillae, 66, 72; parietal width, 138, 148; length of temporal fossa, 66, 81; height of temporal fossa, 51, 61; length of upper toothrow, 203, 226; length of ramus, 336, 371; height of ramus, 57, 66; diameter of tooth (at midlength of row, transverse), 3.5, 4.7 (Douglas et al. 1984). Skulls of offshore dolphins from the most offshore portion of the Eastern Pacific were more similar to those from south of the equator than to those from immediately to the east; variation was correlated with oceanographic variables: water depth, solar insolation, sea-surface temperature, surface salinity, and thermocline depth (Perrin et al. 1994b).

Although sample sizes are small, postcranial skeleton shows geographical variation parallel to that in skull (Perrin et al. 1987). Vertebral formula is 7 C, 13–17 T, 17–24 L, 32–42 Ca, total 74–84.

DISTRIBUTION. *Stenella attenuata* is pantropical, inhabiting tropical, subtropical, and some warm-temperate waters of the world between about 40°N and about 40°S latitude (Fig. 3). The known distribution within this overall range is scattered (Perrin and Hohn 1994; Perrin et al. 1987), but this more likely reflects lack of knowledge rather than significant gaps in distribution. For some areas, e.g., the eastern tropical Pacific, the detailed distribution is known. For other regions, such as the southeast Atlantic, very little is known. The species ranges “north to Massachusetts, the islands of Cape Verde, Northern Red Sea, Persian Gulf (= Arab Gulf), Arabian Sea, Bay of Bengal, South China Sea, East China Sea, Pacific coast of Northern Honshu, Hawaiian Islands, and Baja California Sur,” and “south to Uruguay, Saint Helena, Cape Province, Timor Sea, New South Wales, New Zealand, and about 35°S off Talca, Chile” (Rice 1998:108). Single records from New Zealand (Baker and Stephenson 1972), off temperate Chile (Rice 1998), Southern California (Rice 1998), and Alaska (Perrin et al. 1987) likely represent strays. A record from Victoria, Australia (Dixon 1989), was erroneous, a misidentification of a specimen of *D. delphis*. The species ranks 1st in abundance among cetaceans in the Gulf of Mexico, 2nd in the eastern tropical Pacific and the Sulu Sea, but only 6th in the tropical Indian Ocean (Ballance and Pitman 1998; Dolan 1999; Jefferson and Schiro 1997; Würsig et al. 2000).

FOSSIL RECORD. No fossils of *S. attenuata* are known. The family Delphinidae dates back to the late Miocene in Europe and North America (Barnes et al. 1985).

FORM AND FUNCTION. Average neonatal brain weight is estimated at 311 g; adult brains from the offshore eastern Pacific averaged 726 g ($n = 82$) and ranged from ca. 500 to 900 g (Perrin and Hohn 1994). Other organ weights of adults were: heart ($n = 11$) 236–311 g, lungs ($n = 6$) 1,642–2,275 g, liver ($n = 16$) 1,281–2,195 g, kidneys ($n = 15$) 426–968 g, spleen ($n = 16$) 20–65 g (Perrin and Roberts 1972). Heart and intestine are relatively small-

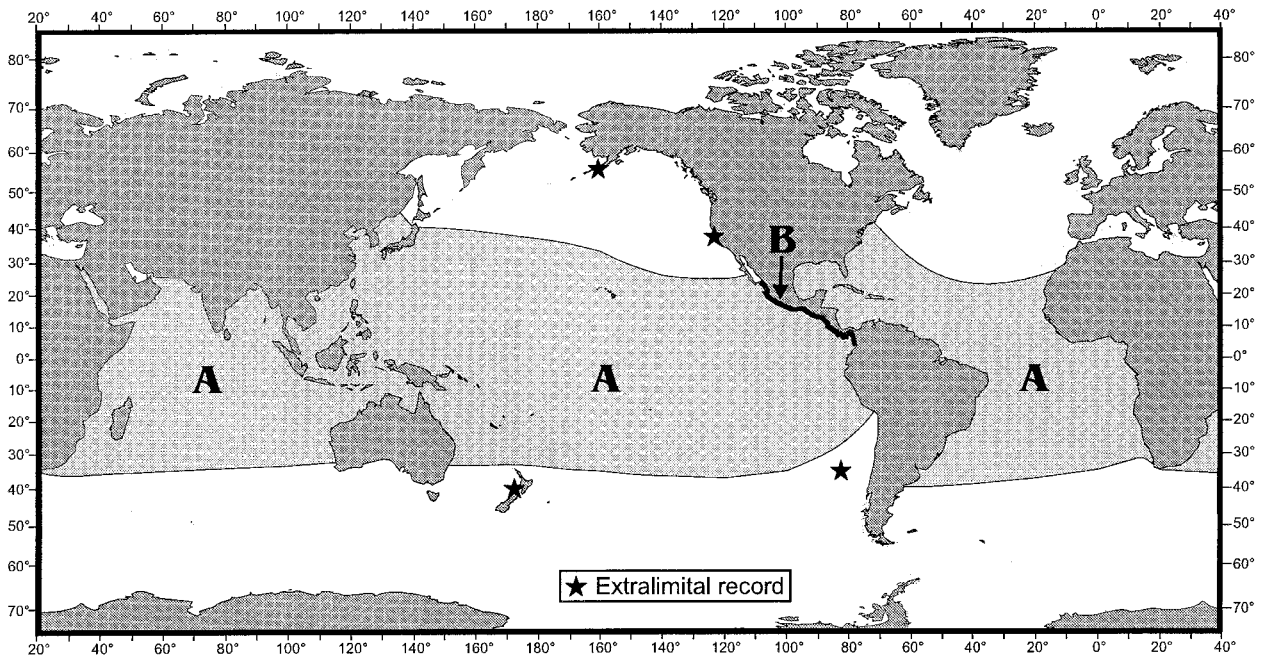


FIG. 3. Geographic distribution of the pantropical spotted dolphin: (a) *S. a. attenuata* and (b) *S. a. graffmani*. Modified from Jefferson et al. (1993).

er than in *S. coeruleoalba* (Miyazaki et al. 1981). Penis is fibroelastic and lacks a baculum (Harrison Matthews 1950).

In the brain a very large nucleus ellipticus may be related to muscular control in the blowhole region (Nieto and Nieto 1984). Islets of Calleja may function with the limbic system in the anosmic pantropical spotted dolphin (Nieto and Nieto 1986). Corpus callosum is relatively small compared with terrestrial mammals (Nieto et al. 1976). Cochlea is typical of species producing broad-spectrum ultrasonic clicks with peak energy below 100 kHz (Ketten and Wartzok 1990).

Milk has a higher concentration of fat (17–32%) than in most dolphins, but not as high as that in baleen whales (Pilson and Waller 1970); chloride concentration (42–51 mEq/kg) is elevated compared with that of cow's milk. Hemoglobin array (of 2 molecular forms S and F) and oxygen dissociation curve are identical or close to those in several other delphinids, *D. delphis*, *Globicephala*, *Orcinus orca*, *S. longirostris*, and *Steno bredanensis*, indicating a biochemical similarity among these species despite great morphological and behavioral differences (Sharp 1975). Myoglobin of *S. attenuata* has been sequenced (Jones et al. 1979). Surface-area-to-mass ratio is lower, and blubber is thinner, than in the cold-water harbor porpoise (*Phocoena phocoena*), reflecting less need to conserve heat in this tropical species (Worthy and Edwards 1990). Ratio of glucose in red blood cells to that in the plasma is relatively high and similar to that in primates (Castellini et al. 1992).

ONTOGENY AND REPRODUCTION. Nervus terminalis ganglion of the brain is relatively small during early development compared with that in *P. phocoena*, but already well separated from the degenerating olfactory bulb (Oelschläger et al. 1988). Development of inner ear and nasal skull is closely similar to that of other odontocetes (Klima 1995, 1999; Solntseva 1983, 1990, 1999). Stripes on the head (the "bridle," made up of eye stripe and blowhole stripe) develop from a single anlage consisting of a band of ca. 100 mm across the back of the head in fetuses (Perrin 1997).

Length at birth is ca. 85 cm (Perrin et al. 1976). Length at 1 year of age in the eastern Pacific is 129 cm (Hohn and Hammond 1985) and 142 cm in the western Pacific (Kasuya 1976, Kasuya et al. 1974); this difference may reflect different analytical approaches (Perrin and Hohn 1994). Growth between males and females does not differ until a secondary growth spurt occurs in males at about the onset of sexual maturation (ca. 160 cm).

Color at birth is dark gray above and ivory below; extremities are dark gray (Perrin 1970). Belly darkens to light gray, then small

dark spots appear ventrally, first in the gular and abdominal regions. Next, light dorsal spots appear. Dark ventral spots increase in size and number until they become largely confluent and fade to light pearl-gray in adults. Light dorsal spots also increase in size and number and may become confluent at the ventral margin of the cape over the eye and behind the cape on the upper side of the peduncle. Spots merge and fade in adults to yield a slightly mottled or (from a distance) uniform gray underside.

Females reach sexual maturity at ca. 9–11 years, depending on the population, and males ca. 3 years later (Kasuya 1976; Kasuya et al. 1974; Myrick et al. 1986). Gestation is 11.2–11.5 months. Ovulation rate for adult females is ca. 0.4–0.6 ovulations per year in the eastern Pacific. Annual pregnancy rate is ca. 0.3, varying with population. Calving interval is ca. 2–4 years. Average length of lactation is 1–2 years and varies with population, being shorter in the eastern tropical Pacific than in the western Pacific. Reproduction is seasonal, with 2–3 weakly defined calving seasons in fall, spring, and possibly summer, in the eastern tropical Pacific (Hohn et al. 1985; Perrin et al. 1976). Only a small fraction of females (<1%) were reproductively senescent in the eastern Pacific. A very slight decline in the minimum age of sexual maturation occurred in Japanese waters (Kasuya 1985).

ECOLOGY. The coastal *S. a. graffmani* in the eastern tropical Pacific occurs in shallow water <200 km off the coast. The offshore *S. a. attenuata* occurs in waters typified by unusual conditions of shallow mixed layer, shoal and sharp thermocline, and relatively low annual variation in surface temperature (Au and Perryman 1985). Seasonal shifts occur in the preferred habitat of pantropical spotted dolphins as well as year-to-year variation in habitat distribution (Fiedler and Reilly 1994; Reilly 1990). In other oceans *S. attenuata* is primarily oceanic, although it may occur in deep water close to shore, as in the Philippines (Dolar 1999; Tan 1995).

Prey includes mainly small epipelagic and some mesopelagic organisms, including fishes of the families Acropomatidae, Alepisauridae, Balistidae, Bathylagidae, Bramidae, Bregmacerotidae, Congridae, Evermannellidae, Exocoetidae, Gempylidae, Gonostomatidae, Hemiramphidae, Melamphaidae, Microstomatidae, Myctophidae, Nomeidae, Notosudidae, Opisthopteroctidae, Paralepididae, Phosichthyidae, Scombridae, Scopelarchidae, Scopelosauridae, Stromateidae, and Trichiuridae; cephalopods of the families Alloposidae, Architeuthidae, Argonautidae, Chiroteuthidae, Cranchiidae, Ctenopterygidae, Enoploteuthidae (the most numerous), Grimalditeuthidae, Histiototeuthidae, Lycoteuthidae, Mastigoteuthidae, Octopoteuthidae, Ommastrephidae, Onychoteuthidae, Pholidoteu-

thidae, Thysanoteuthidae, and Tremoctopodidae; and decapod crustaceans of the Galatheidae and other families (Fitch and Brownell 1968; Perrin and Hohn 1994; Perrin et al. 1973; Robertson and Chivers 1997). Flying fishes are a major food item in terms of volume. Lactating females consume relatively more squid than pregnant females do (Bernard and Hohn 1989).

Population dynamics are poorly understood because samples provided by fisheries catch or by-catch may not be representative. An estimate of the net reproductive rate (the difference between the natural mortality rate plus fishing mortality rate and the observed gross reproductive rate or crude birth rate) is not available for the species (Perrin and Hohn 1994; Perrin and Reilly 1984). Estimated gross reproductive rates are 11–12% in the eastern Pacific and 10% in Japanese waters. The highest possible net rate is probably 9%, with that upper value based on likely unrealistic assumptions about limits in vital rates (Barlow and Boveng 1991; Reilly and Barlow 1986); a range of 2–6% was used in an assessment of eastern Pacific populations (Smith 1983). Depletion of the northeastern offshore stock in the eastern tropical Pacific has not resulted in the expected density-dependent changes in age at maturation and reproductive rates (Chivers and DeMaster 1994).

Average short-term movements are ca. 50–100 km/day (Perrin and Hohn 1994; Perrin et al. 1979; White et al. 1981). Schools may range over several hundred nautical miles with seasonal migrations, e.g., moving with the tropical Kuroshio Current into coastal Japanese waters (Miyazaki et al. 1974).

Pantropical spotted dolphins in the eastern tropical Pacific are often seen together with spinner dolphins (*S. longirostris*), yellowfin tuna (*Thunnus albacares*), and birds of several species (Au and Pitman 1986; Ballance et al. 1997; Perrin 1969a). Some specialization exists among the participants in species, size, and depth distribution of prey (Perrin et al. 1973). Sharks of the genus *Carcharhinus*, the cookie-cutter shark (*Isistius brasiliensis*), the false killer whale (*Pseudorca crassidens*), the killer whale (*Orcinus orca*), and the pygmy killer whale (*Feresa attenuata*) are predators (Perrin and Hohn 1994).

Levels of Hg, Cd, Cr, Cu, Mn, Ni, Se, Zn, dichlorodiphenyltrichloroethanes (DDTs), and polychlorinated biphenyls (PCBs) changed with location in the body and with age in specimens ($n = 30$ – 40 , depending on the contaminant) from the eastern tropical Pacific (André 1988; André et al. 1990). Concentration of Hg was extremely high in the liver, Cd was high in the kidneys, Se and Cu were high in the skin, and DDTs were high in the subcutaneous fat. The range of concentration for all contaminants increased with age but with no clear correlation of level with age. Levels of heavy metals were higher in females than in males, but the reverse was true for organochlorines in adults, because of the purging effects of gestation and lactation (Aguilar et al. 1999). Four specimens from inshore waters of Natal, South Africa, contained higher levels of 7 organochlorines than specimens of other species from offshore waters (Cockcroft et al. 1991). Radioactive isotopes of Cs and K were correlated in muscle tissue and liver of specimens from the eastern tropical Pacific (Calmet et al. 1992); levels of Cs, K, and Pb were similar to those in other top-level predators such as tunas.

Naturally occurring pathologies include vertebral fusion (Ross 1984), vaginal calculi (Sawyer and Walker 1977), endometritis and parametrial parasitic granulomata (Benirschke et al. 1980), benign neoplasms, focal interstitial inflammation of the kidneys, glomerulosclerosis, infarcted reniculus, metaplastic ossification of the lungs, myxoid neurofibroma, mucinous edema, pancreatic tumor, pneumonitis, and vascular disease (including arteriosclerosis, basophilic degeneration, focal myocarditis, and scarring of the vessels and heart—Perrin and Hohn 1994).

Parasitism may be a significant cause of natural mortality. High mortality was correlated with infestation by a nematode (*Crassicauda*) in abdominal muscle and pterygoid sinuses in pantropical spotted dolphins in the eastern Pacific (Perrin and Powers 1980). Other endoparasites include (location in host in parentheses) the cestodes *Monorygma delphini* (mesenteries), *Phyllobothrium delphini* (blubber), *Strobicephalus triangularis* (colon), and *Tetrabothrium forsteri* (intestine); the trematodes *Campyla rochebruni* (stomachs and pancreatic ducts), *Nasitrema globocephalae* (pterygoid air sinuses), *N. stenosoma* (pterygoid air sinuses), *Orthosplanchnus* (intestine), and *Zalophotrema pacificum* (pancreatic duct); the nematodes *Anisakis alexandri* (forestomach), *A. simplex* (forestomach), *A. typica* (forestomach), *Halocercus delphini* (lungs), and *Mastigonema stenellae* (forestomach); and the acanthocephala-

lans *Bulbosoma balanae* (intestine) and *B. vasculosum* (intestine—Dailey and Perrin 1973; Neiland et al. 1970; Ross 1984; Zhou 1980). Ectoparasites and commensals include a cyamid amphipod *Syncyamus* (Leung 1970) and the barnacles *Conchoderma auritum* (Perrin 1969b) and *Xenobalanus globicipitis* (Ross 1984).

BEHAVIOR. Social organization in the pantropical spotted dolphin is poorly understood. Schools may have segregation by age, by sex, or by both (Kasuya 1995; Perrin and Hohn 1994). Age and sex composition of schools varies (Kasuya 1976; Kasuya et al. 1974; Norris et al. 1978). Schools may have from merely a few individuals to several thousand. Distinct and relatively stable subgroups within schools may contain cow-calf pairs, adult males, or juveniles (Pryor and Shallenberger 1995). Juveniles may also occur in discrete small schools separate from larger schools of breeding adults and nursing calves. Overall school size and composition may vary with the time of day.

Individual dolphins can swim as fast as 11.03 m/s; peak power output occurs 1.5 s after the start (Lang and Pryor 1979; Leatherwood and Ljungblad 1979).

Sound pulses range up to 150 kHz, with a duration of 0.075–0.2 ms (Popper 1980). Thirteen whistle types were identified in the eastern tropical Pacific (Moore 1990); they differed from the “looped” whistles of the Atlantic spotted dolphin (*S. frontalis*) in containing many more upswept and downswept elements. The proposed origin of clicks is in the nasal sac system (Cranford et al. 1996).

GENETICS. G-band karyotypes are nearly identical to those of *S. longirostris* and *S. frontalis* (Stock 1981). However, the C-band karyotype differs sharply from that of *S. longirostris*. Restriction fragment length polymorphism (RFLP) analysis of mitochondrial deoxyribonucleic acid (mtDNA) demonstrated ca. 4% genetic divergence between *S. attenuata* and *S. longirostris* (Dizon et al. 1991). In a cladistic phylogenetic analysis based on cytochrome *b* mtDNA (LeDuc et al. 1999), *S. attenuata* shared a strongly supported polytomic clade with *S. clymene* and *S. coeruleoalba* (sister species), *S. frontalis*, *Delphinus*, and *Tursiops aduncus* (to the exclusion of *T. truncatus*).

CONSERVATION STATUS. A great threat to pelagic small cetaceans, such as the pantropical spotted dolphin, is the incidental catch in fisheries (Northridge 1984, 1991; Reeves and Leatherwood 1994). Tuna fishermen in the eastern tropical Pacific chase and capture pantropical spotted dolphins in order to catch the fish with them. In this way, hundreds of thousands of *S. attenuata* were killed annually in the 1960s and the early 1970s (Gosliner 1999; Joseph 1994; National Research Council 1992; Wade 1995). This has depleted the northeastern offshore population of the pantropical spotted dolphin to 27% of its original size of ca. 270,000 in 1959 (Wade 1994).

Stenella attenuata is divided into several geographical management units in the eastern Pacific, including the northeastern offshore, western-southern offshore, and coastal stocks (Dizon et al. 1994). The northeastern offshore and coastal stocks are listed as “Depleted” under the U.S. Marine Mammal Protection Act.

Pantropical spotted dolphins are also taken as potentially unsustainable by-catch in other fisheries around the world in the tropics: in gillnets in Australasia, central North Pacific, coastal Peru and Ecuador, Japan, northern Indian Ocean, Philippines, Taiwan, western North Pacific, and other areas (Northridge 1984, 1991; Perrin and Hohn 1994; Perrin et al. 1994a, 1996); in purse seines in Philippines and Taiwan (Dolar 1994; Perrin et al. 1996), in trawls in West Africa (Maigret 1994); and on longlines in western Central Atlantic (Northridge 1991). Catches in many other fisheries are suspected but not documented. Small directed catches of unknown impact occur or occurred formerly in French Guiana (Van Waerebeek 1990), Indonesia (Barnes 1991), Japan (Bjørge et al. 1994; Kishiro and Kasuya 1993), Laccadive Islands (Manikfan 1991), Mexico (Zavala-González et al. 1994), Philippines (Dolar et al. 1994), Solomon Islands (Dawbin 1966), St. Helena (Perrin 1985), and St. Vincent (Caldwell et al. 1971).

REMARKS. Taxonomy of the spotted dolphins was confused until a major revision in 1987 (Perrin et al. 1987), and records of the 2 species before that date were confounded with varying permutations of the names *S. attenuata*, *S. dubia*, *S. froenata*, *S. frontalis*, and *S. plagiodon* in broad and often contradictory use.

Sherborn (1892) listed the plate of *D. pseudodelphis* by Wiegmann as having been published by Wagner (1846) with the 7th part of Schreiber's Säugethiere, which treated the cetaceans and pinnipeds, and the plate is found in libraries bound with that volume. However, because the plate was cited by Schlegel (1841), Poche (1911) concluded that the plate was first issued with fascicles 95–98 of the series, published in 1840 as part of Wagner's first supplemental volume, even though it had nothing to do with primates, the subject of that volume. Apparently, the various sections and plates of the Schreiber series were not published in serial order in conjunction with the relevant text but rather issued, whenever ready, in serial fascicles with whatever text was being published at the time. Poche's conclusion is followed in the synonymy here. Hershkovitz (1966:32) recognized Schlegel's 1841 reference to the plate, but listed the species as authored by "Wiegmann, 1840 (or earlier)."

Gray's 1846 name *Steno attenuatus* (= *S. attenuata*) was ruled to have priority as a nomen conservandum over the older synonyms *D. velox* G. Cuvier and *D. pseudodelphis* Wiegmann because of its currency in the 20th century (International Commission of Zoological Nomenclature 1991; Perrin 1990). Other common names are (English) bridled dolphin, Cape dolphin, Graffman's dolphin (*S. a. graffmani*), Gulf of Panama spotted dolphin, narrow-snouted dolphin, sharp-beaked dolphin, slender dolphin, slender-beaked dolphin, spotted porpoise, spotter, white-spotted dolphin; (French) dauphin à petites pectorales, dauphin vélocé, gamin; (Spanish) delfín machado, delfín moteado, delfín pintado, estenela moteado, tonino pintado; (German) dünnschnabel Delphin, pfeilschnelle Delphin, schabracken Delphin, schneller Delphin, unächte Delphin; (Japanese) arari iruka, madara iruka; (Hawaiian) kiko; (Russian) pyatnistyy delfin; (Afrikaans) gevlekte dolfyn; (Indonesian) temu kira (used for spinner dolphin as well); (Cebuano in Negros Oriental, Philippines) balakiki; and (Portuguese) gofinho pintado dos trópicos.

Stenella (originally a subgenus—Gray 1866) is the Latin diminutive form of *Steno*, the genus which Gray (1846) erected for his earlier-listed (1843), but undescribed and unfigured species *D. attenuatus*, a nomen nudum. *Steno* is from Greek and means narrow. The trivial name *attenuata* is Latin and means reduced, slight, or unadorned. Gray called the species "attenuate-beaked dolphin," thus apparently perceiving the holotype skull as narrow and with a reduced, small, or simple rostrum compared with other dolphin skulls in the British Museum. This is not clearly understandable as the rostrum is actually relatively long rather than short. However, he earlier called *D. attenuatus* the "sharp-beaked dolphin." He may have understood the Latin *attenuata* to mean sharp rather than small or reduced; this better fits the appearance of the skull.

L. Ford photographed the skull. Robert L. Pitman contributed the photograph of the live animal. I thank them and T. Jefferson and an anonymous reviewer for helping improve the manuscript.

LITERATURE CITED

- AGUILAR, A., A. BORRELL, AND T. PASTOR. 1999. Biological factors affecting variability of persistent levels in cetaceans. *Journal of Cetacean Research and Management Special Issue* 1:83–116.
- ANDRÉ, J. M. 1988. Recherche en écotoxicologie marine sur la contamination des delphinidés par les micropolluants—métaux-traces et composés organochlorés. Ph.D. dissertation, University of Bordeaux, France, 282 pp.
- ANDRÉ, J. M., F. RIBEYRE, AND A. BOUDOU. 1990. Mercury contamination levels and distribution in tissues and organs of delphinids (*Stenella attenuata*) from the eastern tropical Pacific, in relation to biological and ecological factors. *Marine Environmental Research* 30:43–72.
- AU, D. W. K., AND W. L. PERRYMAN. 1985. Dolphin habitats in the eastern tropical Pacific. *Fishery Bulletin, U.S.* 83:623–643.
- AU, D. W. K., AND R. L. PITMAN. 1986. Seabird interactions with dolphins and tuna in the eastern tropical Pacific. *The Condor* 88:304–317.
- BAKER, A. N., AND A. B. STEPHENSON. 1972. The occurrence of the dolphin genus *Stenella* in New Zealand waters. *Records of the Dominion Museum* 8:107–114.
- BALLANCE, L. T., AND R. L. PITMAN. 1998. Cetaceans of the tropical western Indian Ocean: distribution, relative abundance, and comparisons with cetacean communities of two other tropical ecosystems. *Marine Mammal Science* 14:429–459.
- BALLANCE, L. T., R. L. PITMAN, AND S. B. REILLY. 1997. Seabird community structure along a productivity gradient: importance of competition and energetic constraint. *Ecology* 78:1502–1518.
- BARLOW, J., AND P. BOVENG. 1991. Modeling age-specific mortality for marine mammal populations. *Marine Mammal Science* 7: 50–65.
- BARNES, L. G., D. P. DOMNING, AND C. E. RAY. 1985. Status of studies of fossil marine mammals. *Marine Mammal Science* 1: 15–53.
- BARNES, L. H. 1991. Indigenous whaling and porpoise hunting in Indonesia. *UNEP Marine Mammal Technical Report* 3:99–106.
- BENIRSCHKE, K., M. L. JOHNSON, AND R. BENIRSCHKE. 1980. Is ovulation in dolphins, *Stenella longirostris* and *Stenella attenuata*, always copulation-induced? *Fishery Bulletin, U.S.* 78:507–528.
- BERNARD, H. J., AND A. A. HOHN. 1989. Differences in feeding habits between pregnant and lactating spotted dolphins (*Stenella attenuata*). *Journal of Mammalogy* 70:211–215.
- BJØRGE, A., R. L. BROWNELL, JR., G. P. DONOVAN, AND W. F. PERRIN (EDS.). 1994. Significant direct and incidental catches of small cetaceans. Report of the International Whaling Commission Special Issue 15:76–126.
- CALDWELL, D. K., M. C. CALDWELL, W. F. RATHJEN, AND J. R. SULLIVAN. 1971. Cetaceans from the Lesser Antilles Island of St. Vincent. *Fishery Bulletin, U.S.* 69:303–312.
- CALMET, D., D. WOODHEAD, AND J. M. ANDRÉ. 1992. ²¹⁰Pb, ¹³⁷Cs and ⁴⁰K in three species of porpoises caught in the eastern tropical Pacific Ocean. *Journal of Environmental Radioactivity* 15:153–169.
- CASTELLINI, M. A., D. P. COSTA, AND J. M. CASTELLINI. 1992. Blood glucose distribution, brain size and diving in small odontocetes. *Marine Mammal Science* 8:294–298.
- CHIVERS, S. J., AND D. P. DEMASTER. 1994. Evaluation of biological indices for three eastern Pacific dolphin species. *Journal of Wildlife Management* 53:470–478.
- COCKCROFT, V. G., G. J. B. ROSS, A. D. CONNELL, B. D. GARDNER, AND A. C. BUTLER. 1991. Occurrence of organochlorines in stranded cetaceans and seals from the east coast of southern Africa. *UNEP Marine Mammal Technical Report* 3:271–276.
- CRANFORD, T. W., M. AMUNDIN, AND K. S. NORRIS. 1996. Functional morphology and homology in the odontocete nasal complex: implications for sound generation. *Journal of Morphology* 228:223–285.
- CUVIER, G. 1829. *Le règne animal*. Déterville, Paris, France 1:1–540.
- DAILEY, M. D., AND W. F. PERRIN. 1973. Helminth parasites of porpoises of the genus *Stenella* in the eastern tropical Pacific, with descriptions of two new species: *Mastigonema stenellae* gen. et sp. n. (Nematoda: Spiruroidea) and *Zalophotrema pacificum* sp. n. (Trematoda: Digenea). *Fishery Bulletin, U.S.* 71: 455–471.
- DAWBIN, W. H. 1966. Porpoises and porpoise hunting in Malaita. *Australian Natural History* 15:207–211.
- DIXON, J. M. 1989. The first record of *Stenella attenuata* (Gray), the spotted dolphin, from Victoria, Australia. *Victorian Naturalist* 106:194–196.
- DIZON, A. E., W. F. PERRIN, AND P. A. AKIN. 1994. Stocks of dolphins (*Stenella* spp. and *Delphinus delphis*) in the eastern tropical Pacific: a phylogenetic classification. *NOAA Technical Report NMFS* 119, 20 pp.
- DIZON, A. E., S. O. SOUTHERN, AND W. F. PERRIN. 1991. Molecular analysis of mtDNA types in exploited populations of spinner dolphins (*Stenella longirostris*). Report of the International Whaling Commission Special Issue 13:184–202.
- DOLAR, M. L. L. 1994. Incidental takes of small cetaceans in fisheries in Palawan, central Visayas and northern Mindanao in the Philippines. Report of the International Whaling Commission Special Issue 15:355–363.
- DOLAR, M. L. L. 1999. Abundance, distribution and feeding ecology of small cetaceans in the eastern Sulu Sea and Tañon Strait, Philippines. Ph.D. dissertation, Scripps Institution of Oceanography, University of California, San Diego, 241 pp.
- DOLAR, M. L. L., S. J. LEATHERWOOD, C. J. WOOD, M. N. R. ALAVA,

- C. L. HILL, AND L. V. ARAGONES. 1994. Directed fisheries for cetaceans in the Philippines. Report of the International Whaling Commission 44:439–457.
- DOUGLAS, M. E., G. D. SCHNELL, AND D. J. HOUGH. 1984. Differentiation between inshore and offshore spotted dolphins in the eastern tropical Pacific Ocean. *Journal of Mammalogy* 65:375–387.
- FIEDLER, P. C., AND S. B. REILLY. 1994. Interannual variability of dolphin habitats in the eastern tropical Pacific. II: effects on abundances estimated from tuna vessel sightings, 1975–1990. *Fishery Bulletin, U.S.* 92:451–463.
- FITCH, J. E., AND R. L. BROWNELL, JR. 1968. Fish otoliths in cetacean stomachs and their importance in interpreting feeding habits. *Journal of the Fisheries Research Board of Canada* 25:2,561–2,574.
- GOSLINER, M. L. 1999. The tuna–dolphin controversy. Pp. 120–155 in *Conservation and management of marine mammals* (J. R. Twiss and R. R. Reeves, eds.). Smithsonian Institution Press, Washington, D.C.
- GRAY, J. E. 1843. List of the specimens of Mammalia in the collections of the British Museum. Trustees of the British Museum, London, United Kingdom.
- GRAY, J. E. 1846. On the cetaceous animals. Pp. 1–53 in *The zoology of the voyage of H. M. S. Erebus and Terror under the command of Captain Sir James Clark Ross during the years 1839 to 1843. Volume 1. Mammalia, birds* (J. Richardson and J. E. Gray, eds.). E. W. Jansen, London, United Kingdom.
- GRAY, J. E. 1850. Catalog of mammals in the British Museum. Cetacea. Trustees of the British Museum, London, United Kingdom.
- GRAY, J. E. 1865. Notices of a new genus of delphinoid whales from the Cape of Good Hope, and of other cetaceans from the same seas. *Proceedings of the Zoological Society of London* 1865:522–529.
- GRAY, J. E. 1866. Description of three species of dolphins in the free museum at Liverpool. *Proceedings of the Zoological Society of London* 1865:735–739.
- HARRISON MATTHEWS, L. 1950. The male urigenital tract in *Stenella frontalis* (G. Cuvier). Pp. 223–247 in *Atlantide Report 1. Scientific results of the Danish expedition to the coasts of tropical West Africa 1945–1946* (A. F. Bruun, ed.). Danish Science Press, Copenhagen, Denmark.
- HERSHKOVITZ, P. 1966. Catalog of living whales. *United States National Museum Bulletin* 246:1–259.
- HEYNING, J. E., AND W. F. PERRIN. 1994. Evidence for two species of common dolphin (genus *Delphinus*) from the eastern North Pacific. *Natural History Museum of Los Angeles County Contributions in Science* 442:1–35.
- HOHN, A. A., S. J. CHIVERS, AND J. BARLOW. 1985. Reproductive maturity and seasonality of male spotted dolphins, *Stenella attenuata*, in the eastern tropical Pacific. *Marine Mammal Science* 1:273–293.
- HOHN, A. A., AND P. S. HAMMOND. 1985. Early postnatal growth of the spotted dolphin, *Stenella attenuata*, in the offshore eastern tropical Pacific. *Fishery Bulletin, U.S.* 83:553–566.
- INTERNATIONAL COMMISSION ON ZOOLOGICAL NOMENCLATURE. 1991. Opinion 1660. *Steno attenuatus* Gray, 1846 (currently *Stenella attenuata*; Mammalia, Cetacea): specific name conserved. *Bulletin of Zoological Nomenclature* 48:277–278.
- IREDALE, T., AND E. L. G. TROUGHTON. 1934. A check-list of the mammals recorded from Australia. *Australian Museum Memoir* 6:1–112.
- JEFFERSON, T. A., S. LEATHERWOOD, AND M. A. WEBBER. 1993. *FAO species identification guide. Marine mammals of the world. Food and Agriculture Organisation, Rome, Italy.*
- JEFFERSON, T. A., AND A. J. SCHIRO. 1997. Distribution of cetaceans in the offshore Gulf of Mexico. *Mammal Review* 27:27–50.
- JONES, B. N., ET AL. 1979. Complete amino acid sequence of the myoglobin from the Pacific spotted dolphin, *Stenella attenuata graffmani*. *Biochimica et Biophysica Acta* 577:454–463.
- JOSEPH, J. 1994. The tuna–dolphin controversy in the eastern Pacific Ocean; biological, economic, and political impacts. *Ocean Development and International Law Journal* 25:1–30.
- KASUYA, T. 1973. Systematic consideration of recent toothed whales based on the morphology of the tympanic-periotic bone. *Scientific Reports of the Whales Research Institute, Tokyo* 25:1–103, pl. 1–28.
- KASUYA, T. 1976. Reconsideration of life history parameters of the spotted and striped dolphins based on cemental layers. *Scientific Reports of the Whales Research Institute, Tokyo* 28:73–106.
- KASUYA, T. 1985. Effect of exploitation on reproductive parameters of the spotted and striped dolphins off the Pacific coast of Japan. *Scientific Reports of the Whales Research Institute, Tokyo* 36:107–138.
- KASUYA, T. 1995. Overview of cetacean life histories: an essay in their evolution. Pp. 481–497 in *Whales, seals, fish and man* (A. S. Blix, L. Walløe, and Ø. Ulltang, eds.). Elsevier Science B.V., Amsterdam, Netherlands.
- KASUYA, T., N. MIYAZAKI, AND W. H. DAWBIN. 1974. Growth and reproduction of *Stenella attenuata* in the Pacific coast of Japan. *Scientific Reports of the Whales Research Institute, Tokyo* 26:157–226.
- KETTEN, D. R., AND D. WARTZOK. 1990. Three-dimensional reconstruction of the dolphin ear. Pp. 81–105 in *Sensory abilities of cetaceans. Laboratory and field evidence* (J. A. Thomas and R. A. Kastelein, eds.). NATO ASI Series. Plenum Press, New York.
- KISHIRO, T., AND T. KASUYA. 1993. Review of Japanese dolphin drive fisheries and their status. Report of the International Whaling Commission 43:439–452.
- KLIMA, M. 1995. Cetacean phylogeny and systematics based on the morphogenesis of the nasal skull. *Aquatic Mammals* 21:79–89.
- KLIMA, M. 1999. Development of the cetacean nasal skull. *Advances in Anatomy, Embryology and Cell Biology* 149:1–143.
- LANG, T. C., AND K. PRYOR. 1979. Hydrodynamic performance of a porpoise (*Stenella attenuata*). *Science* 152:531–533.
- LEATHERWOOD, S., AND D. K. LJUNGBLAD. 1979. Nighttime swimming and diving behavior of a radio-tagged spotted dolphin, *Stenella attenuata*. *Cetology* 34:1–6.
- LEDUC, R. G., W. F. PERRIN, AND A. E. DIZON. 1999. Phylogenetic relationships between the delphinid cetaceans based on full cytochrome *b* sequences. *Marine Mammal Science* 15:619–648.
- LEUNG, Y.-K. 1970. First record of the whale-lice genus *Syn-cyamus* (Cyamidae: Amphipoda) from the western Mediterranean, with notes on the biology of odontocete cyamids. *Investigations on Cetacea* 2:243–247.
- LÖNNBERG, E. 1934. *Prodelphinus graffmani* n. sp. a new dolphin from the Pacific coast of Mexico. *Arkiv för Zoologie* 26A:1–11, pl. 1.
- MAIGRET, L. 1994. Marine mammals and fisheries along the West African coast. Report of the International Whaling Commission Special Issue 15:307–316.
- MALM, A. W. 1871. Hvaldjur i Sveriges Museer, Ar 1869. *Kongliga Svenska Vetenskaps-Akademiens Handlingar* 9(2):1–110.
- MANIKFAN, M. A. 1991. A note on the capture of the smaller cetaceans for food in the Laccadive Islands. *UNEP Marine Mammal Technical Report* 3:107–109.
- MIYAZAKI, N., Y. FUJISE, AND T. FUJIYAMA. 1981. Body and organ weight of striped and spotted dolphins off the Pacific coast of Japan. *Scientific Reports of the Whales Research Institute, Tokyo* 33:27–67.
- MIYAZAKI, N., T. KASUYA, AND M. NISHIWAKI. 1974. Distribution and migration of two species of *Stenella* in the Pacific coast of Japan. *Scientific Reports of the Whales Research Institute, Tokyo* 26:227–243.
- MOORE, S. E. 1990. Spotted dolphin bioacoustics. *Southwest Fisheries Science Center Administrative Report, LJ-90-24C*, 61 pp.
- MYRICK, A. C., JR., A. A. HOHN, J. BARLOW, AND P. SLOAN. 1986. Reproductive biology of female spotted dolphins, *Stenella attenuata*, from the eastern tropical Pacific. *Fishery Bulletin, U.S.* 84:247–259.
- NATIONAL RESEARCH COUNCIL. 1992. *Dolphins and the tuna industry*. National Academy Press, Washington, D.C.
- NEILAND, K. A., D. W. RICE, AND B. L. HOLDEN. 1970. Helminths of marine mammals. I. The genus *Nasitrema*, air sinus flukes of delphinid Cetacea. *Journal of Parasitology* 56:305–316.
- NIETO, A., AND D. NIETO. 1984. The nucleus ellipticus in *Stenella*

- (Cetacea, Delphinidae). Investigations on Cetacea 16:124–134.
- NIETO, A., AND D. NIETO. 1986. The islets of Calleja in the dolphin. Investigations on Cetacea 18:213–218.
- NIETO, A., D. NIETO, AND P. PACHECO. 1976. Possible phylogenetic significance of the corpus callosum with special reference to the dolphin brain (*Stenella graffmani*). Acta Anatomica 94:397–402.
- NORRIS, K. S., W. E. STUNTZ, AND W. ROGERS. 1978. The behavior of porpoises and tuna in the eastern tropical Pacific yellowfin tuna fishery—preliminary studies. National Technical Information Service PB-283 970S:1–86.
- NORTHRIDGE, S. P. 1984. World review of interactions between marine mammals and fisheries. FAO Fisheries Technical Paper 251:1–190.
- NORTHRIDGE, S. P. 1991. An updated world review of interactions between marine mammals and fisheries. FAO Fisheries Technical Paper 251, Supplement 1:1–58.
- OELSCHLÄGER, H. A., E. H. BUHL, AND J. F. DANN. 1988. Development of the nervus terminalis in mammals including toothed whales and humans. Annals of the New York Academy of Science 524:447–464.
- PEALE, T. R. 1848. United States Exploring Expedition. Volume 8. Mammals and ornithology. C. Sherman, Philadelphia, Pennsylvania.
- PERRIN, W. F. 1969a. Using porpoise to catch tuna. World Fishing 18:42–45.
- PERRIN, W. F. 1969b. The barnacle, *Conchoderma auritum*, on a porpoise (*Stenella graffmani*). Journal of Mammalogy 50:149–151.
- PERRIN, W. F. 1970. Color pattern of the eastern Pacific spotted porpoise *Stenella graffmani* Lönnberg (Cetacea, Delphinidae). Zoologica 54:135–149.
- PERRIN, W. F. 1975. Variation of spotted and spinner porpoise (genus *Stenella*) in the eastern Pacific and Hawaii. Bulletin of the Scripps Institution of Oceanography 21:1–206.
- PERRIN, W. F. 1985. The former dolphin fishery at St Helena. Report of the International Whaling Commission 35:423–428.
- PERRIN, W. F. 1990. Case 2717. *Steno attenuatus* Gray, 1846 (currently *Stenella attenuata*; Mammalia, Cetacea): proposed conservation of the specific name. Bulletin of Zoological Nomenclature 47:32–37.
- PERRIN, W. F. 1997. Development and homologies of head stripes in the delphinoid cetaceans. Marine Mammal Science 13:1–43.
- PERRIN, W. F., AND A. A. HOHN. 1994. Pantropical spotted dolphin *Stenella attenuata*. Pp. 71–98 in Handbook of marine mammals: the first book of dolphins (S. H. Ridgway and R. Harrison, eds.). Academic Press, London, United Kingdom 5:1–416.
- PERRIN, W. F., AND J. E. POWERS. 1980. Role of a nematode in natural mortality of spotted dolphins. Journal of Wildlife Management 44:960–963.
- PERRIN, W. F., AND S. B. REILLY. 1984. Reproductive parameters of dolphins and small whales of the family Delphinidae. Report of the International Whaling Commission Special Issue 6:97–133.
- PERRIN, W. F., AND E. L. ROBERTS. 1972. Organ weights of non-captive porpoise (*Stenella* spp.). Bulletin of the Southern California Academy of Sciences 71:19–32.
- PERRIN, W. F., J. M. COE, AND J. R. ZWEIFEL. 1976. Growth and reproduction of the spotted porpoise, *Stenella attenuata*, in the offshore eastern tropical Pacific. Fishery Bulletin, U.S. 74:229–269.
- PERRIN, W. F., M. L. L. DOLAR, AND M. N. R. ALAVA (EDS.). 1996. Report of the Workshop on the Biology and Conservation of Small Cetaceans and Dugongs of Southeast Asia. United Nations Environment Programme UNEP(W)/EAS WG.1/ 2:1–101.
- PERRIN, W. F., G. P. DONOVAN, AND J. BARLOW. 1994a. Gillnets and cetaceans. Report of the International Whaling Commission Special Issue 15:1–629.
- PERRIN, W. F., W. E. EVANS, AND D. B. HOLTS. 1979. Movements of pelagic dolphins (*Stenella* spp.) in the eastern tropical Pacific as indicated by results of tagging, with summary of tagging operations, 1969–1976. NOAA Technical Report NMFS SSRF 737:1–13.
- PERRIN, W. F., E. D. MITCHELL, J. G. MEAD, D. K. CALDWELL, AND P. J. H. VAN BREE. 1981. *Stenella clymene*, a rediscovered tropical dolphin of the Atlantic. Journal of Mammalogy 62:583–598.
- PERRIN, W. F., G. D. SCHNELL, D. J. HOUGH, J. W. GILPATRICK, JR., AND J. V. KASHIWADA. 1994b. Reexamination of geographic variation in cranial morphology of the pantropical spotted dolphin, *Stenella attenuata*, in the eastern Pacific. Fishery Bulletin, U.S. 92:324–346.
- PERRIN, W. F., R. R. WARNER, C. H. FISCUS, AND D. B. HOLTS. 1973. Stomach contents of porpoise, *Stenella* spp., and yellowfin tuna, *Thunnus albacares*, in mixed-species aggregations. Fishery Bulletin, U.S. 71:1077–1092.
- PERRIN, W. F. ET AL. 1987. Revision of the spotted dolphins, *Stenella* spp. Marine Mammal Science 3:99–170.
- PILSON, M. E. Q., AND D. W. WALLER. 1970. Composition of milk from spotted and spinner porpoises. Journal of Mammalogy 51:74–79.
- POCHE, F. 1911. Über den Inhalt und die Erscheinungszeiten der einzelnen Teile, Hefte etc. und die verschiedenen Ausgaben des Schreber'schen Säugetierwerkes (1774–1855). Archiv für Naturgeschichte 77:126–183.
- POPPER, A. N. 1980. Sound emission and detection by delphinids. Pp. 1–52 in Cetacean behavior (L. M. Herman, ed.). John Wiley and Sons, New York.
- PRYOR, K., AND I. K. SHALLENBERGER. 1995. Social structure in spotted dolphins (*Stenella attenuata*) in the tuna purse seine fishery in the eastern tropical Pacific. Pp. 135–172 in On behavior: essays and research (K. Pryor, ed.). Sunshine Books, North Bend, Washington, D.C.
- REEVES, R. R., AND S. LEATHERWOOD (COMPILERS). 1994. Dolphins, porpoises, and whales. 1994–1998 Action Plan for the Conservation of Cetaceans. The International Union for the Conservation of Nature and Natural Resources (IUCN), Gland, Switzerland.
- REILLY, S. B. 1990. Seasonal changes in distribution and habitat differences among dolphins in the eastern tropical Pacific. Marine Ecology Progress Series 66:1–11.
- REILLY, S. B., AND J. BARLOW. 1986. Rates of increase in dolphin populations. Fishery Bulletin, U.S. 84:527–533.
- RICE, D. W. 1998. Marine mammals of the world. Systematics and distribution. Society for Marine Mammalogy Special Publication 4:1–231.
- ROBERTSON, K. M., AND S. J. CHIVERS. 1997. Prey occurrence in pantropical spotted dolphins, *Stenella attenuata*, from the eastern tropical Pacific. Fishery Bulletin, U.S. 95:334–348.
- ROSS, G. J. B. 1984. The smaller cetaceans of the south east coast of southern Africa. Annals of the Cape Provincial Museums (Natural History) 15:173–410.
- SAWYER, J. E., AND W. A. WALKER. 1977. Vaginal calculi in the dolphin. Journal of Wildlife Disease 13:346–348.
- SCHLEGEL, H. 1841. Abhandlungen aus dem Gebiete der Zoologie und vergleichenden Anatomie. I Heft. A. Arnz & Company, Leiden, Netherlands.
- SHARP, G. D. 1975. A study of the electrophoretic and O₂ disassociation properties of the hemoglobins of some delphinid cetaceans. Comparative Biochemistry and Physiology 51A:673–681.
- SHERBORN, C. D. 1892. On the dates of the parts, plates and text of Schreber's 'Säugethiere.' Proceedings of the Zoological Society of London 1891:587–592.
- SMITH, T. D. 1983. Changes in size of three dolphin (*Stenella* spp.) populations in the eastern tropical Pacific. Fishery Bulletin, U.S. 81:1–13.
- SOLNTSEVA, G. N. 1983. Early development of the acoustic analyzer peripheral region in *Stenella attenuata* (Odontoceti). Ontogenez 14:312–318.
- SOLNTSEVA, G. N. 1990. Formation of an adaptive structure of the peripheral part of the auditory analyzer in aquatic, echo-locating mammals during ontogenesis. Pp. 363–383 in Sensory abilities of cetaceans. Laboratory and field evidence (J. A. Thomas and R. A. Kastelein, eds.). NATO ASI Series. Plenum Press, New York.
- SOLNTSEVA, G. N. 1999. Development of the auditory organ in terrestrial, semi-aquatic, and aquatic animals. Aquatic Mammals 25:135–148.
- STOCK, A. D. 1981. Chromosomal variation and constitutive het-

- erchromatin in three porpoise species (genus *Stenella*). Cytogenetic Cell Genetics 31:91–100.
- TAN, J. M. L. 1995. A field guide to whales and dolphins in the Philippines. Bookmark, Manila, Philippines.
- VAN WAEREBEEK, K. 1990. Preliminary notes on the existence of a dolphin by-catch off French Guiana. Aquatic Mammals 16:71–71.
- WADE, P. 1994. Abundance and population dynamics of two eastern Pacific dolphins, *Stenella attenuata* and *Stenella longirostris orientalis*. Ph.D. dissertation, Scripps Institution of Oceanography, University of California, San Diego, 255 pp.
- WADE, P. 1995. Revised estimates of incidental kill of dolphins (Delphinidae) by the purse-seine tuna fishery in the eastern tropical Pacific, 1959–1972. Fishery Bulletin, U.S. 93:345–354.
- WAGNER, J. A. 1840. Die Säugethiere. Supplementband. I. Abtheilung. Heft 95–98. Expedition des Schreber'schen Säugethier- und des Esper'chen Schmetterlingswerkes, Erlangen.
- WAGNER, J. A. 1846. Die Säugethiere. Die Ruderfüßer und Fischzithiere. Expedition des Schreber'schen Säugethier- und des Esper'chen Schmetterlingswerkes, Erlangen, Germany 7:1–369.
- WHITE, M. J., JR., J. G. JENNINGS, W. F. GANDY, AND L. CORNELL. 1981. An evaluation of tagging, marking, and tattooing techniques for small delphinids. NOAA Technical Memorandum NMFS SWFC 16:1–142.
- WORTHY, G. A. J., AND E. F. EDWARDS. 1990. Morphometric and biochemical factors affecting heat loss in a small temperate cetacean (*Phocoena phocoena*) and a small tropical cetacean (*Stenella attenuata*). Physiological Zoology 63:432–442.
- WÜRSIG, B., T. A. JEFFERSON, AND D. J. SCHMIDLY. 2000. The marine mammals of the Gulf of Mexico. Texas A&M University Press, College Station.
- ZAVALA-GONZÁLEZ, A., J. URBÁN-RAMÍREZ, AND C. ESQUIVEL-MACÍAS. 1994. A note on artisanal fisheries interactions with small cetaceans in Mexico. Report of the International Whaling Commission Special Issue 15:235–237.
- ZHOU, K. 1980. Notes on three species of dolphins from the South China Sea and Jiulongjiang River. Oceanologia et Limnologia Sinica 11:306–313, pl. 1–3.
- Associate editor of this account was SERGE LARIVIÈRE. Editor was VIRGINIA HAYSEN.
- W. F. PERRIN, SOUTHWEST FISHERIES SCIENCE CENTER, P.O. BOX 271, LA JOLLA, CALIFORNIA 92038-0271.